

THE ART OF URBAN ENVIRONMENTS



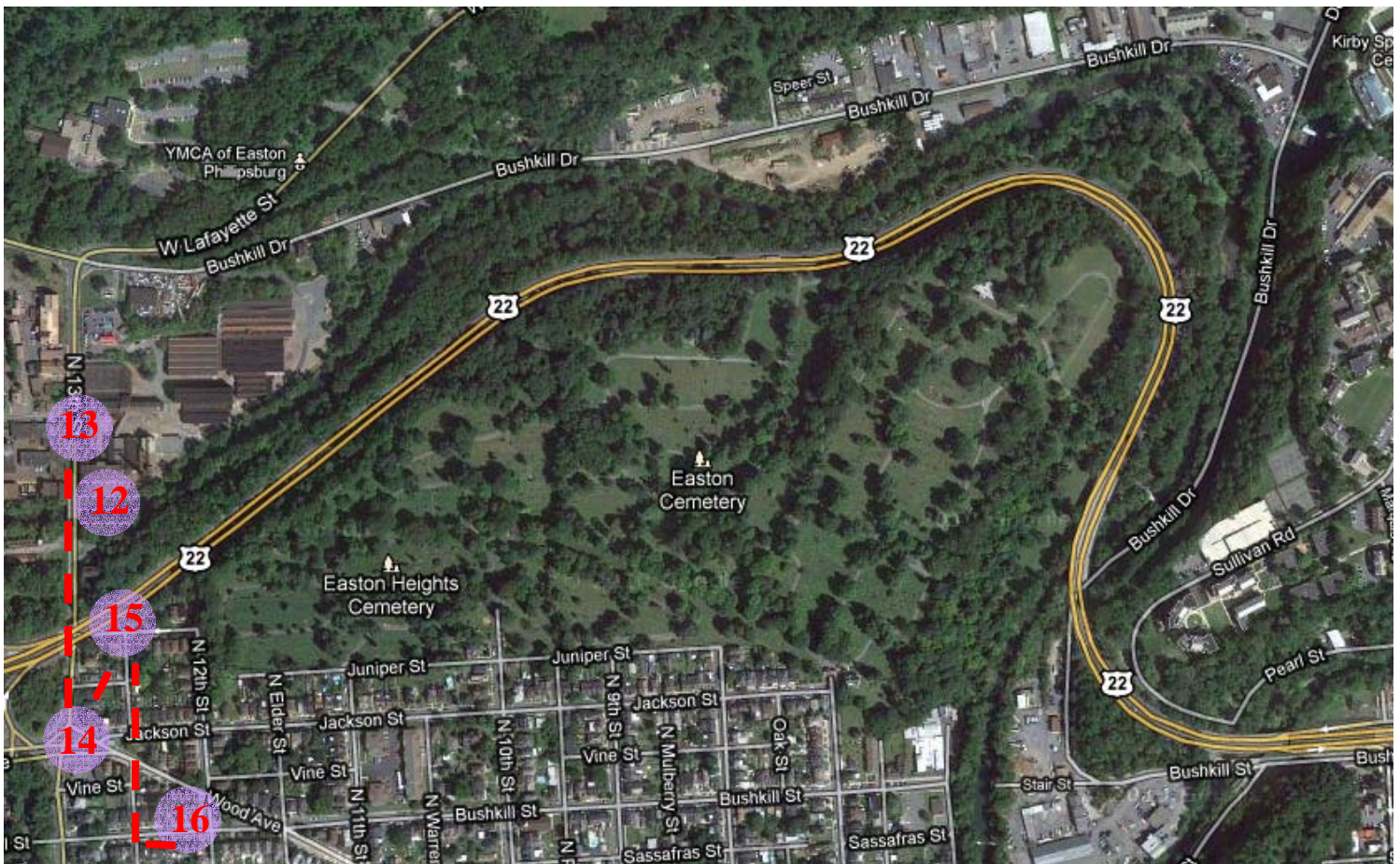
INSTALLATIONS AND PERFORMANCES THAT ENGAGE PLACES OF NATURE ART AND CULTURE IN TRANSFORMING THE POST-INDUSTRIAL AMERICAN CITY

ROUTE I.

BUSHKILL CORRIDOR

Cluster C: Silk Mill and North 13th Street Interchange of Route 22

- “Eco-Houses” are being restored using green standards developed by Lafayette College
- Gateway to the West Ward, Easton’s largest, most diverse, and most challenged neighborhood
- Late-19th century silk mill is part of a proposed 15-acre redevelopment site for a new live-work “creative” community



THE ART OF URBAN ENVIRONMENTS



INSTALLATIONS AND PERFORMANCES THAT ENGAGE PLACES OF NATURE ART AND CULTURE IN TRANSFORMING THE POST-INDUSTRIAL AMERICAN CITY

Site 12

Silk Mill, South Side Facing the Bushkill, and North 13th Street Stone Bridge *(City of Easton)*



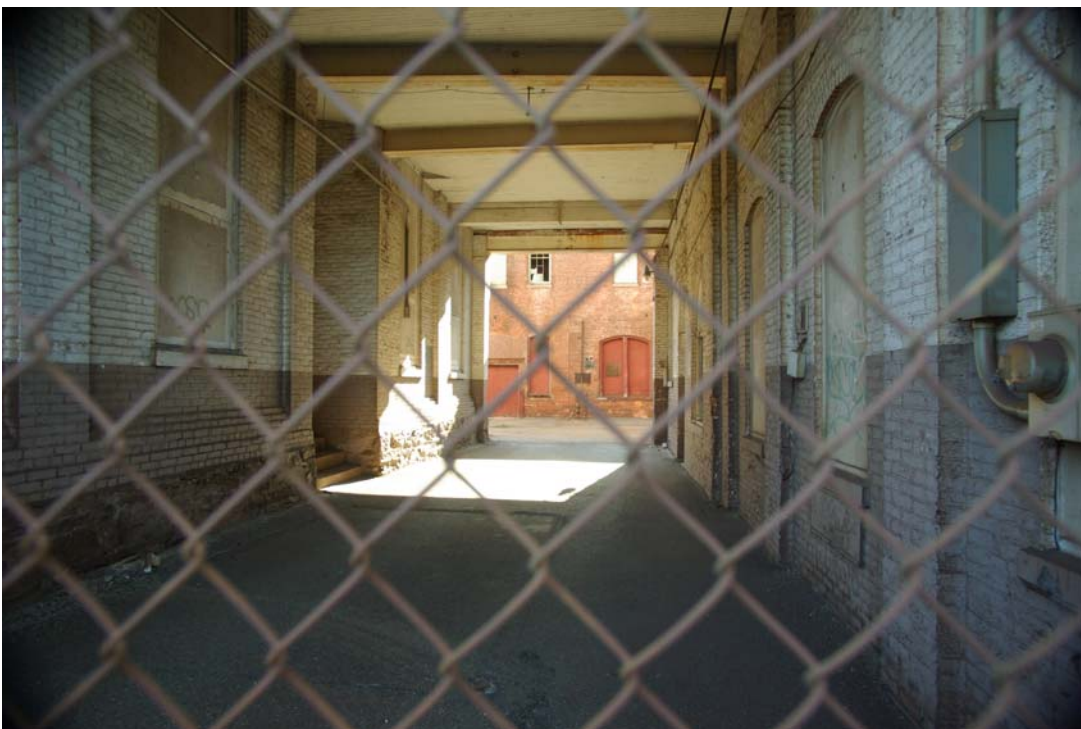
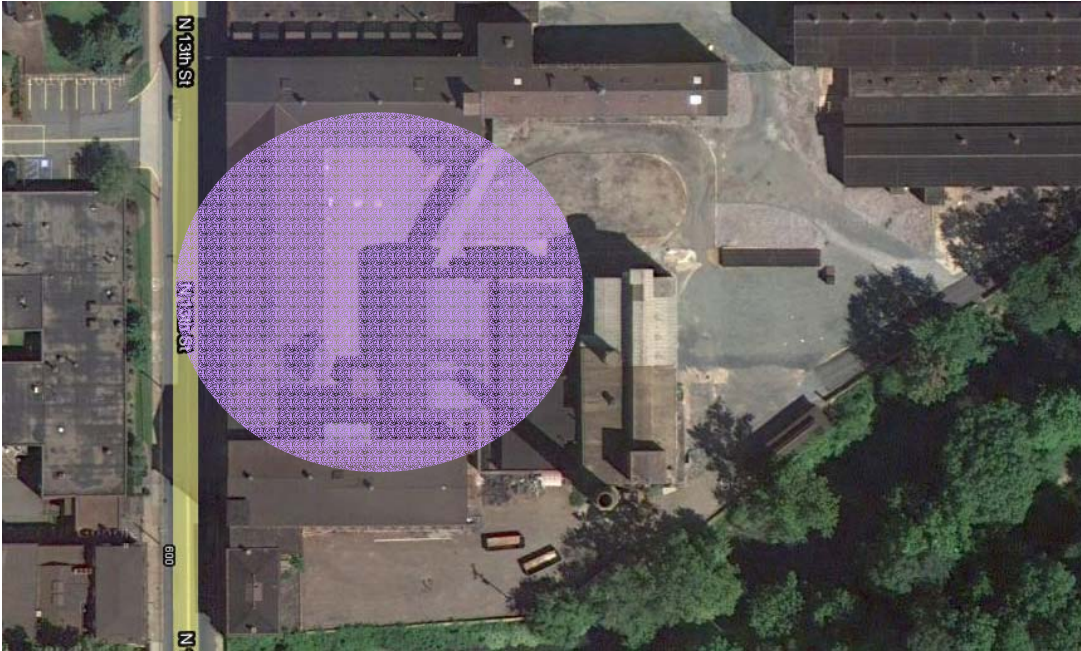
THE ART OF URBAN ENVIRONMENTS



INSTALLATIONS AND PERFORMANCES THAT ENGAGE PLACES OF NATURE ART AND CULTURE IN TRANSFORMING THE POST-INDUSTRIAL AMERICAN CITY

Site 13

Silk Mill, Interior Courtyard, Entrance from North 13th Street *(City of Easton)*



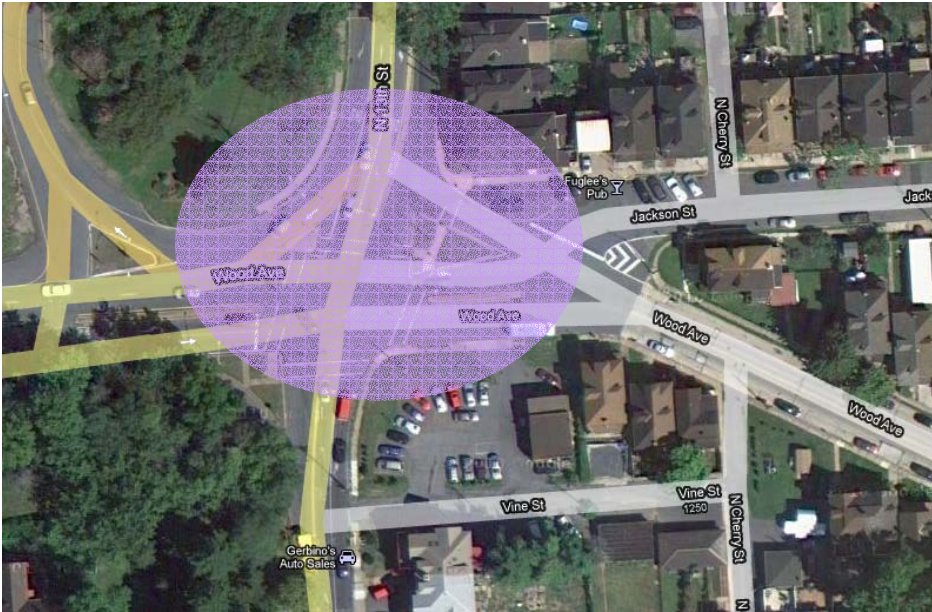
THE ART OF URBAN ENVIRONMENTS



INSTALLATIONS AND PERFORMANCES THAT ENGAGE PLACES OF NATURE ART AND CULTURE IN TRANSFORMING THE POST-INDUSTRIAL AMERICAN CITY

Site 14

Interchange of State Route 22 at North 13th Street *(City of Easton) West Ward*



THE ART OF URBAN ENVIRONMENTS



INSTALLATIONS AND PERFORMANCES THAT ENGAGE PLACES OF NATURE ART AND CULTURE IN TRANSFORMING THE POST-INDUSTRIAL AMERICAN CITY

Site 15

Chidsey Street Lot near State Route 22 *(City of Easton) West Ward*



THE ART OF URBAN ENVIRONMENTS



INSTALLATIONS AND PERFORMANCES THAT ENGAGE PLACES OF NATURE ART AND CULTURE IN TRANSFORMING THE POST-INDUSTRIAL AMERICAN CITY

Site 16

Eco-House, 1207 Bushkill Street *(CACLV) West Ward*

