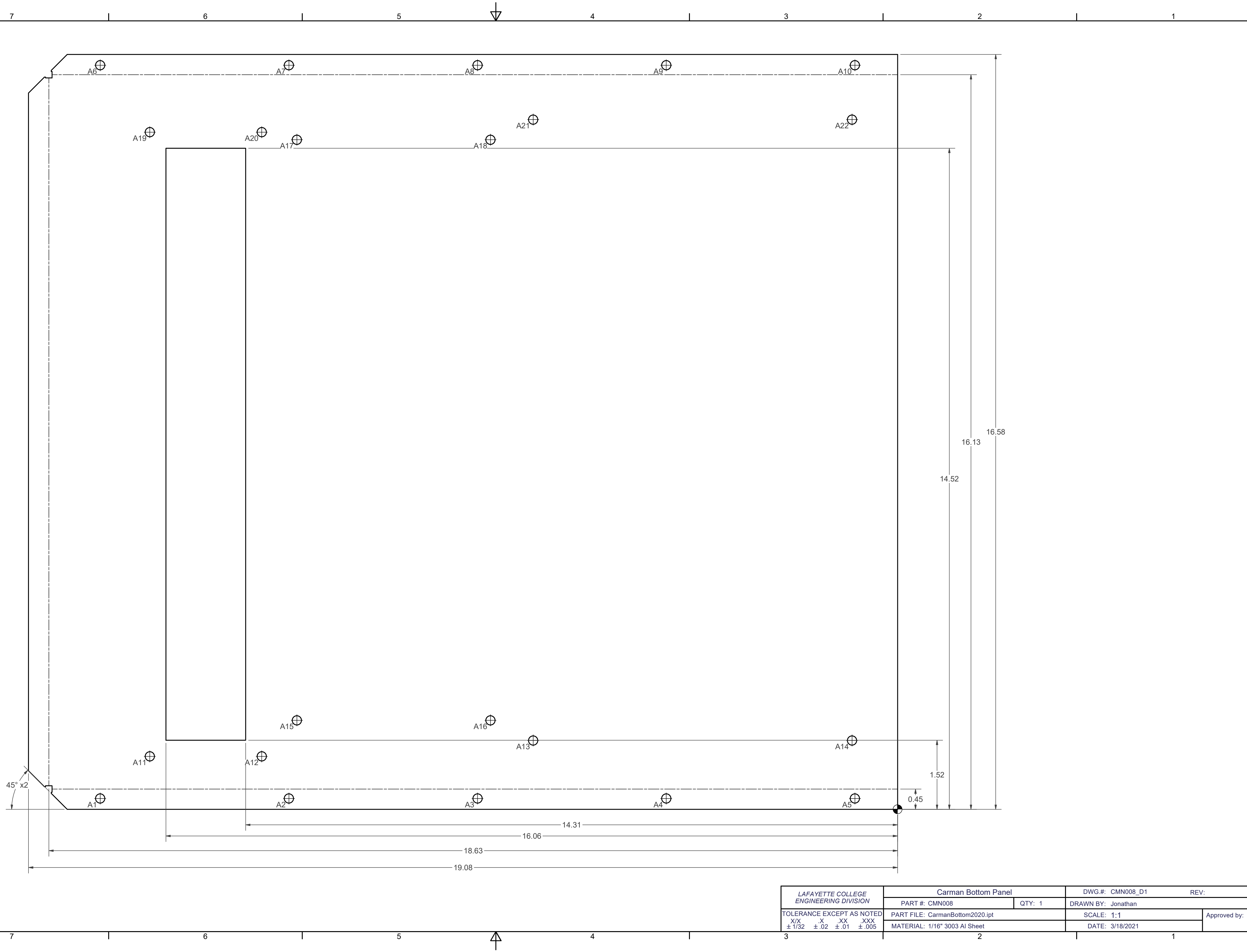


Hole Table			
HOLE	XDIM	YDIM	DESCRIPTION
A1	-17.505	0.238	Ø0.20 THRU
A2	-13.363	0.238	Ø0.20 THRU
A3	-9.221	0.238	Ø0.20 THRU
A4	-5.079	0.238	Ø0.20 THRU
A5	-0.938	0.238	Ø0.20 THRU
A11	-16.416	1.163	Ø0.20 THRU
A12	-13.959	1.163	Ø0.20 THRU
A13	-8.000	1.511	Ø0.20 THRU
A14	-1.000	1.511	Ø0.20 THRU
A15	-13.188	1.954	Ø0.20 THRU
A16	-8.938	1.954	Ø0.20 THRU
A17	-13.188	14.704	Ø0.20 THRU
A18	-8.938	14.704	Ø0.20 THRU
A19	-16.416	14.870	Ø0.20 THRU
A20	-13.959	14.870	Ø0.20 THRU
A21	-8.000	15.146	Ø0.20 THRU
A22	-1.000	15.146	Ø0.20 THRU
A6	-17.505	16.340	Ø0.20 THRU
A7	-13.363	16.340	Ø0.20 THRU
A8	-9.221	16.340	Ø0.20 THRU
A9	-5.079	16.340	Ø0.20 THRU
A10	-0.938	16.340	Ø0.20 THRU



LAFAYETTE COLLEGE ENGINEERING DIVISION	Carman Bottom Panel		DWG #: CMN008_D1	REV:
	PART #: CMN008	QTY: 1	DRAWN BY: Jonathan	Approved by:
TOLERANCE EXCEPT AS NOTED XX .X .XX .XXX ±1/32 ±.02 ±.01 ±.005	PART FILE: CarmanBottom2020.ipt	SCALE: 1:1	DATE: 3/18/2021	
MATERIAL: 1/16" 3003 Al Sheet				