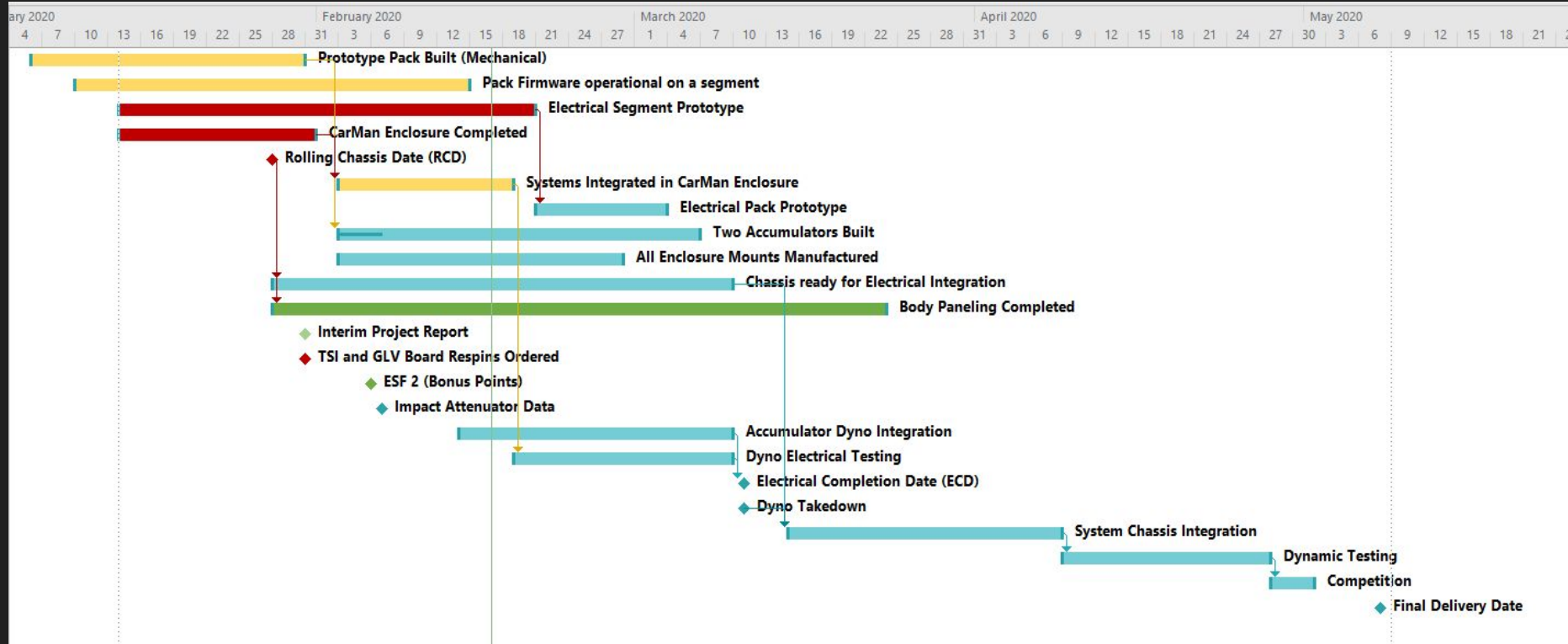
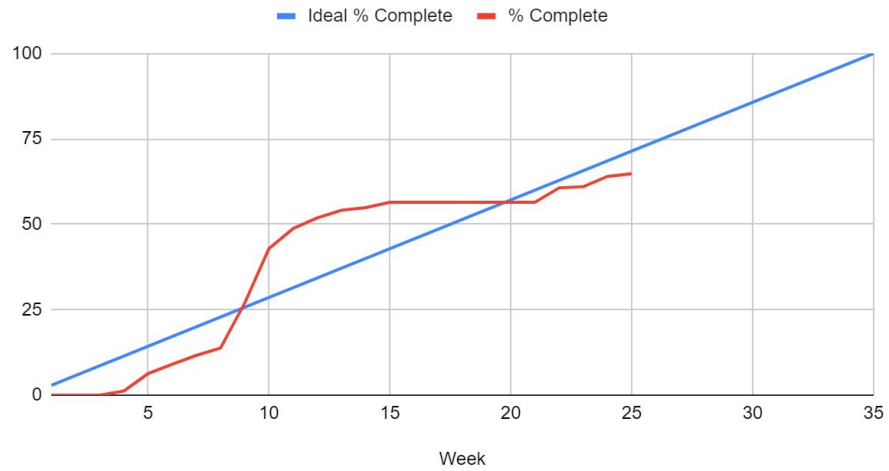


Project Status Letter

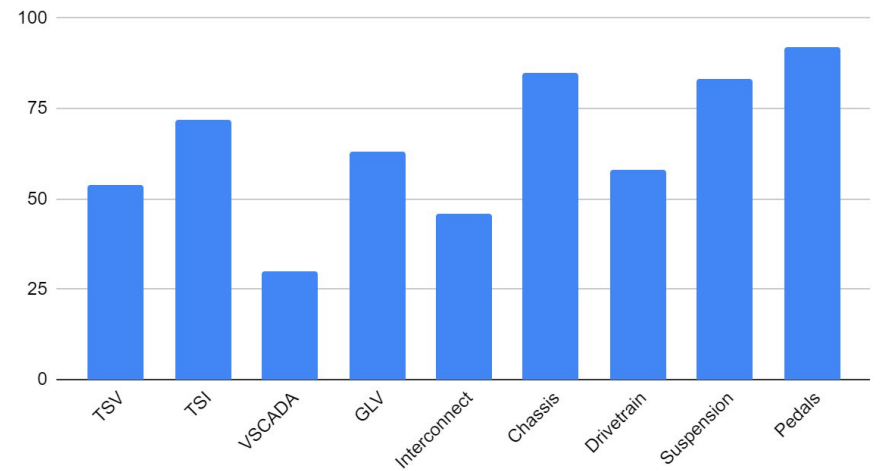
Week 24



Ideal % Complete and % Complete



% WBS Completion of Project for each Subsystem



Budget

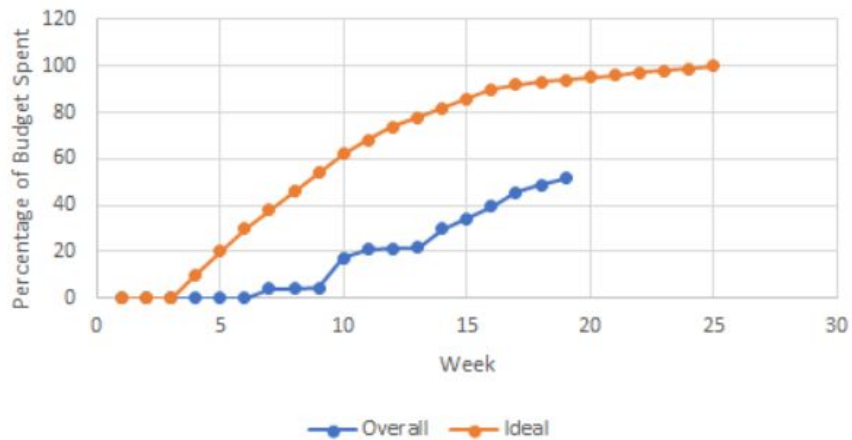
Subsystem	Allocated Budget	Total Spent	Budget Remaining	Percentage Spent
Pedal/Controls	\$200.00	\$0.00	\$200.00	0.00%
Cooling	\$500.00	\$399.25	\$100.75	79.85%
Brakes	\$400.00	\$0.00	\$400.00	0.00%
SCADA	\$800.00	\$492.75	\$307.25	61.59%
Suspension	\$2,500.00	\$1,268.50	\$1,231.50	50.74%
Steering	\$200.00	\$0.00	\$200.00	0.00%
CarMan (TSI/GLV)	\$4,400.00	\$1,622.14	\$2,777.86	36.87%
Shipping/tax	\$3,690.00	\$571.30	\$3,118.70	15.48%
Interconnect	\$1,600.00	\$1,516.35	\$83.65	94.77%
Registration	\$2,000.00	\$2,000.00	\$0.00	100.00%
Drive Train	\$2,600.00	\$634.68	\$1,965.32	24.41%
TSV	\$8,000.00	\$5,502.58	\$2,497.42	68.78%
Chassis/Body	\$1,100.00	455.02	\$644.98	41.37%
Overall	\$27,990.00	\$14,462.57	\$13,527.43	51.67%

ORDER INFORMATION								TEAM NAME	CONTACT PERSON
Line	Qty	Unit	Part #	Description	Web Link	Unit Price	Price	Purchasing Team	First/Last Name
1	1	50	7243K21	fully insulated quick-disconnect terminals - single crimp female, for 16-14 wire gauge	https://www.mcmaster.com	\$15.72	\$15.72	GLV	Noah Engine
2	1	50	7243K22	fully insulated quick-disconnect terminals - single crimp male, for 16-14 wire gauge	https://www.mcmaster.com	\$17.32	\$17.32	GLV	Noah Engine
3	1	50	7113K95	ring terminals - vinyl insulated, for 16-14 gauge and 3/8" screw	https://www.mcmaster.com	\$13.94	\$13.94	GLV	Noah Engine
4							\$0.00		

ORDER INFORMATION								TEAM NAME	CONTACT PERSON
Qty	Unit	Part #	Description	Web Link	Unit Price	Price	Purchasing Team	First/Last Name	
1	100ft	34GC50	Primary Automotive Wire, Number of Conductors 1, 16 AWG	https://www.grainger.com	\$11.17	\$11.17	FSAE - Carman	Maureen McShane	
						\$0.00			

ORDER INFORMATION								TEAM NAME	CONTACT PERSON
Qty	Unit	Part #	Description	Web Link	Unit Price	Price	Purchasing Team	First/Last Name	
1	1	AMP1426CCF	14"x12"x6" POLYLINE® polycarbonate wall mount enclosure assembly with 4-screw lift-off clear cover	https://www.alliedmould.com	\$81.33	\$81.33	Interconnect	Montserrat Mendez	

Percentage Spent of Total Budget



Percentage of Allocated Budget Spent

