

PSL Week 14

Covering Period from 11/24-12/1

Prepared by Jordyn Brosemer and Cat Neely



LAFAYETTE
MOTORSPORTS

SCADA

Display made more readable, and interact with arduino serial monitor

Plans

- SC 4.1.3 - (WIP) I want to have the display respond to CAN messages, such as displaying the warning screens.

TSI

Plans

- Debug firmware on new board
- MCS Tests
- Tests Conducted

DYNO

Completed

- Motor Assembled

Plans

- Assemble Cooling system with motor
- Run Motor!
- Drill holes in motor plate

TSV

Completed

- **Firmware written to CellMan board**
- **Started Assembling PacMan board**
- **Display interrupts for buttons**
- **Ordered Supporting hardware**
- **CAN bus test board**

Plans

- **CellMan**
 - Test CellMan Functionality
 - Compile Errata for CellMan
 - CellMan communicate over I2C
- **PacMan**

- PacMan PCB soldered - woohooooo!!!!!!!!!!!!
- Test communication between cores of ESP32
- Finish code integration
- **Display**
- **Mechanical**
 - All Prototype Drawings approved
 -

GLV

- **Completed**
 - N/A
- **Plans**
 - Solder second GLV BOB
 - Connector Design Submitted
 - New BOB mounted
 - Board Tests passed

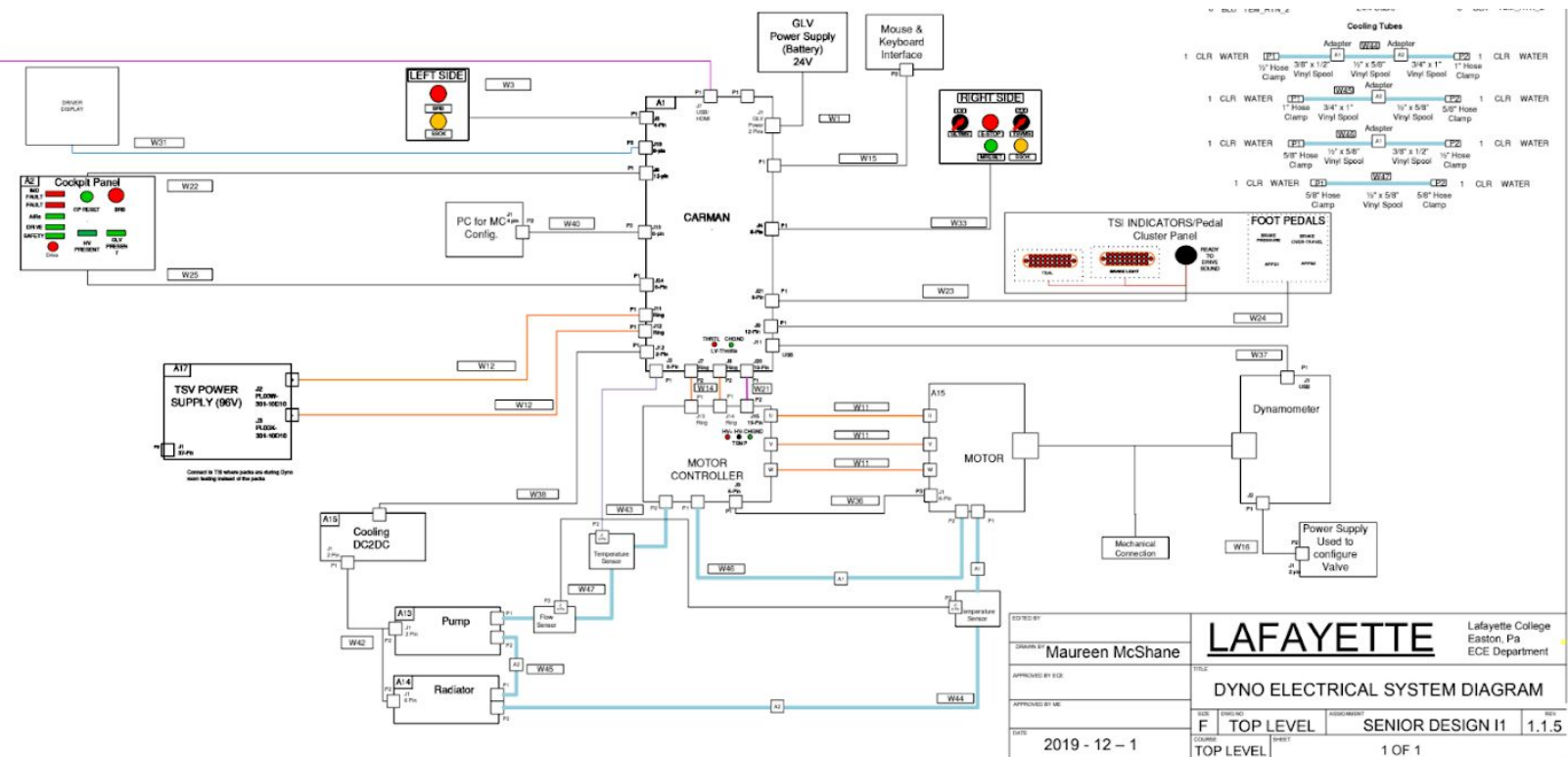
CarMan IC & Firmware Design Review!

Interconnect

Updated top level electrical diagram

Updated the Dyno room diagram per new cooling system and CarMan

- Using for testing



Plans

- Combine GLV and TSI connection to Cockpit?
- Cockpit enclosure

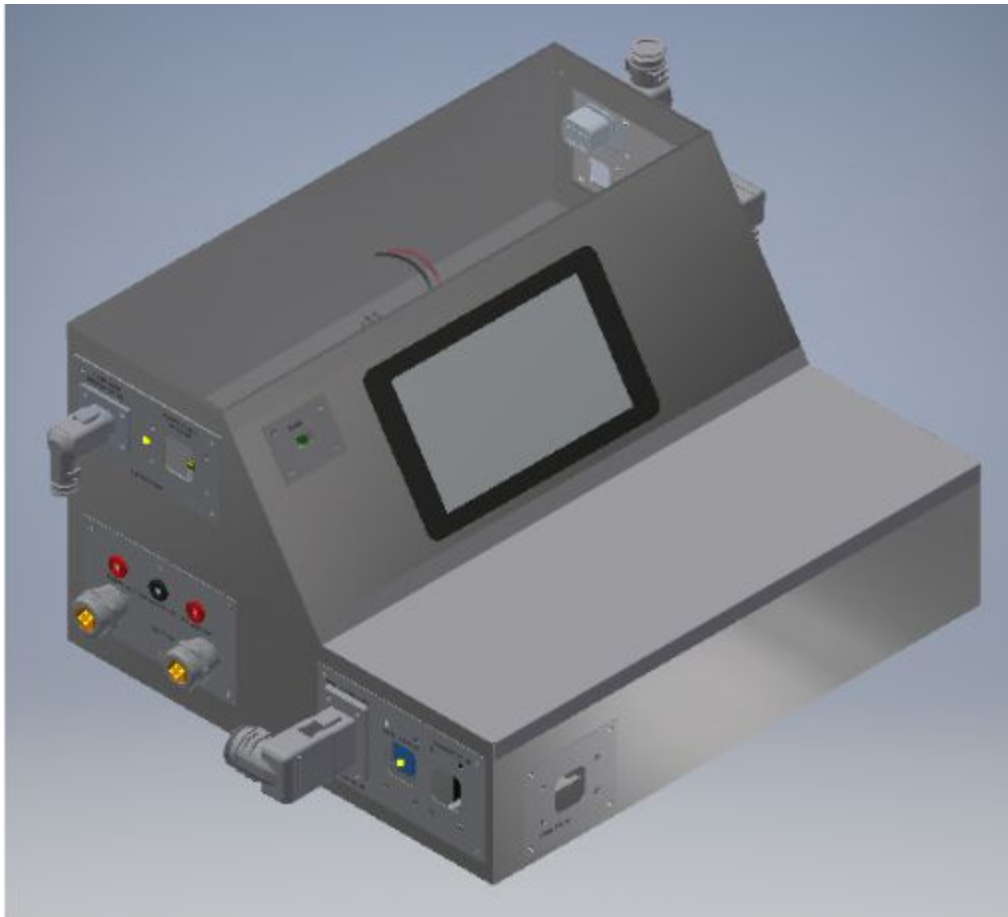
CarMan

Completed

- 3rd CarMan design review

Plans

- CarMan ICD finished
- Make final updates
- Submit drawings to machine shop



Chassis

- **Completed**
 - N/A
- **Plans**
 - Manufacture new dashboard
 - Manufacture new seat mounts
 - Finish front suspension mounting
- **Changes:**
 - Need longer bottom front suspension pickup points
 - Need to put in changes into inventor

Drivetrain

- **Completed**
 - Finished motor shaft drawings!
 - Strain relief is done --- drawings approved !!!!!!!!!!!!! yay luc !!!!!
 - Michael possibly order sprockets
- **Plans**
 - Design Motor Strain Relief
 - Mount Radiator to Car
 - Motor Shaft drawings

Suspension

- **Completed**
 - **WIP** Adjustable Uprights



- **Plans**
 - Assemble rear A-Arms
 - Help put chassis pickup points on car

Pedals

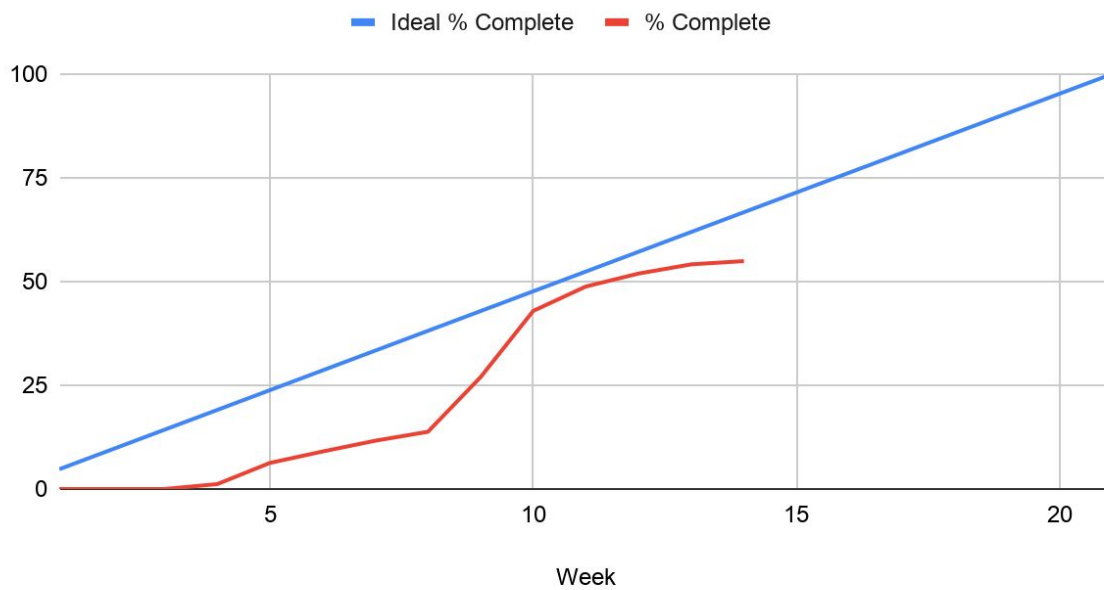
- **Plans**
 - **PED 1.2.2** Manufacture Mounts for master cylinders

Management

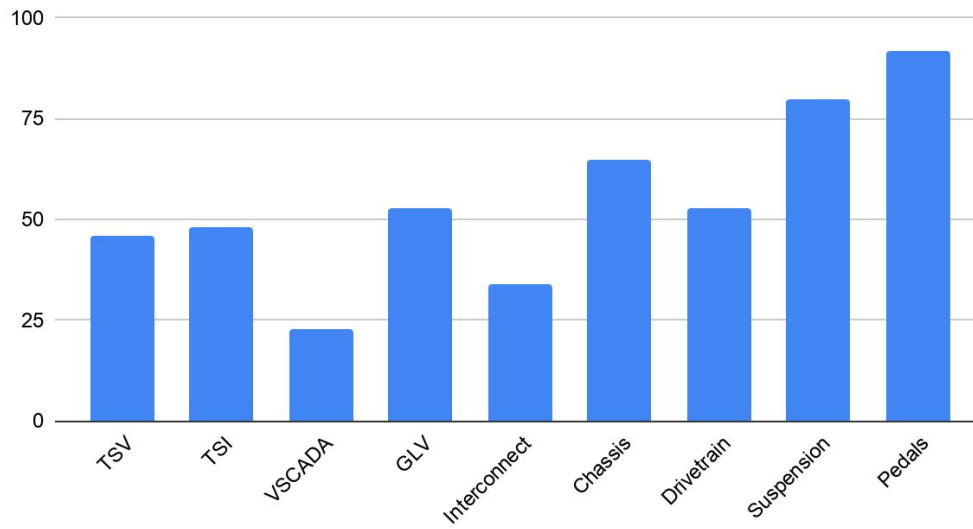
- **Plans**

- Submit Program information Sheet
- Midyear Design Report
- Dynamic Test Plan Submitted
- CDR #2
- ORGANIZE POSTER SESSION TEAMS AT THE END OF THIS MEETINGS

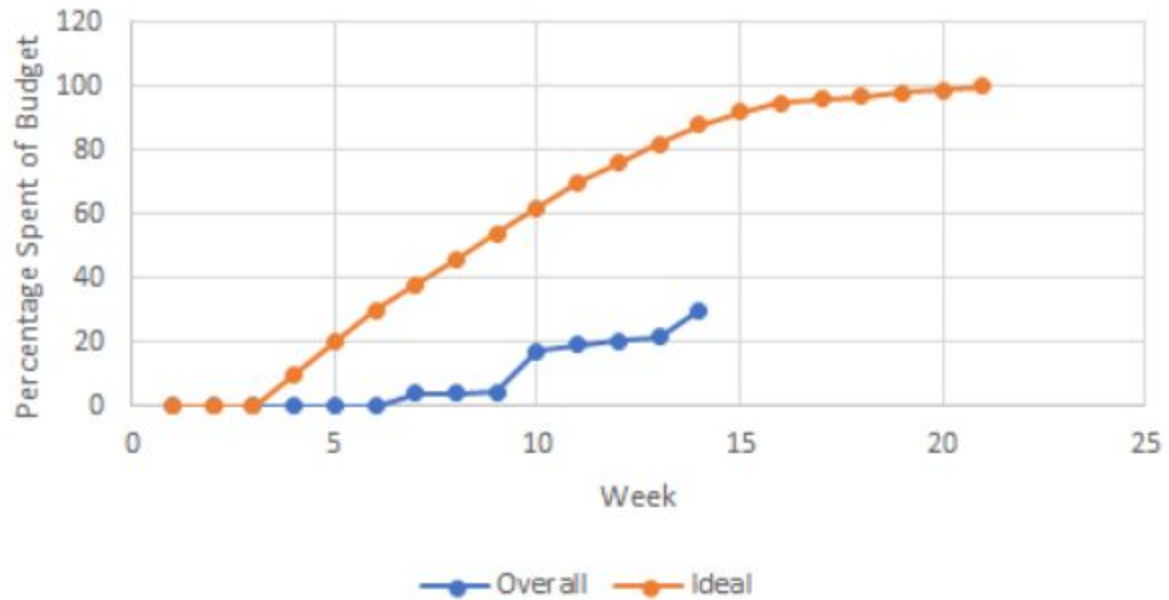
Ideal % Complete and % Complete



% WBS Completion of Project for each Subsystem



Percentage Spent of Total Budget



Sub-System	Allocated Budget	Total Spent	Budget Remaining	Percentage Spent
Pedal/Controls	\$200.00	\$0.00	\$200.00	0.00%
Cooling	\$500.00	\$400.00	\$100.00	80.00%
Brakes	\$400.00	\$0.00	\$400.00	0.00%
SCADA	\$800.00	\$218.87	\$581.13	27.36%
Dyno	\$100.00	\$0.00	\$100.00	0.00%
Suspension	\$2,500.00	\$1,342.42	\$1,157.58	53.70%
Steering	\$200.00	\$0.00	\$200.00	0.00%
CarMan (TSI/GLV)	\$4,400.00	\$1,355.11	\$3,044.89	30.80%
Shipping/tax	\$3,690.00	\$230.63	\$3,459.37	6.25%
Interconnect	\$700.00	\$658.47	\$41.53	94.07%
Registration	\$2,000.00	\$2,000.00	\$0.00	100.00%
Drive Train	\$3,200.00	\$201.07	\$2,998.93	6.28%
TSV	\$8,000.00	\$1,920.97	\$6,079.04	24.01%
Chassis/Body	\$1,300.00	42.81	\$1,257.19	3.29%
Overall	\$27,990.00	\$8,370.35	\$19,619.66	29.90%

Percentage of Allocated Budget Spent

