

Meridith Guro

ECE 492

02/27/2017

### PacMAN Memo 1

On Friday, February 24th, Emilie and I finished populating 3 PacMAN (hardware v 0.7) boards. We devised an incremental building plan that included test points to ensure you are building the board properly as well as give a suggested order for placing parts. There was already 1 PacMAN board produced by Preston in Fall 2017 installed in Pack 1. The serial numbers of the boards Emilie and I produced are: 03, 04, 05. Board 02 was populated before we made the incremental test plan and does **not** function properly.

We will now begin creating a test program based on Preston's firmware for the PacMAN in order to ensure the boards are safe to install.

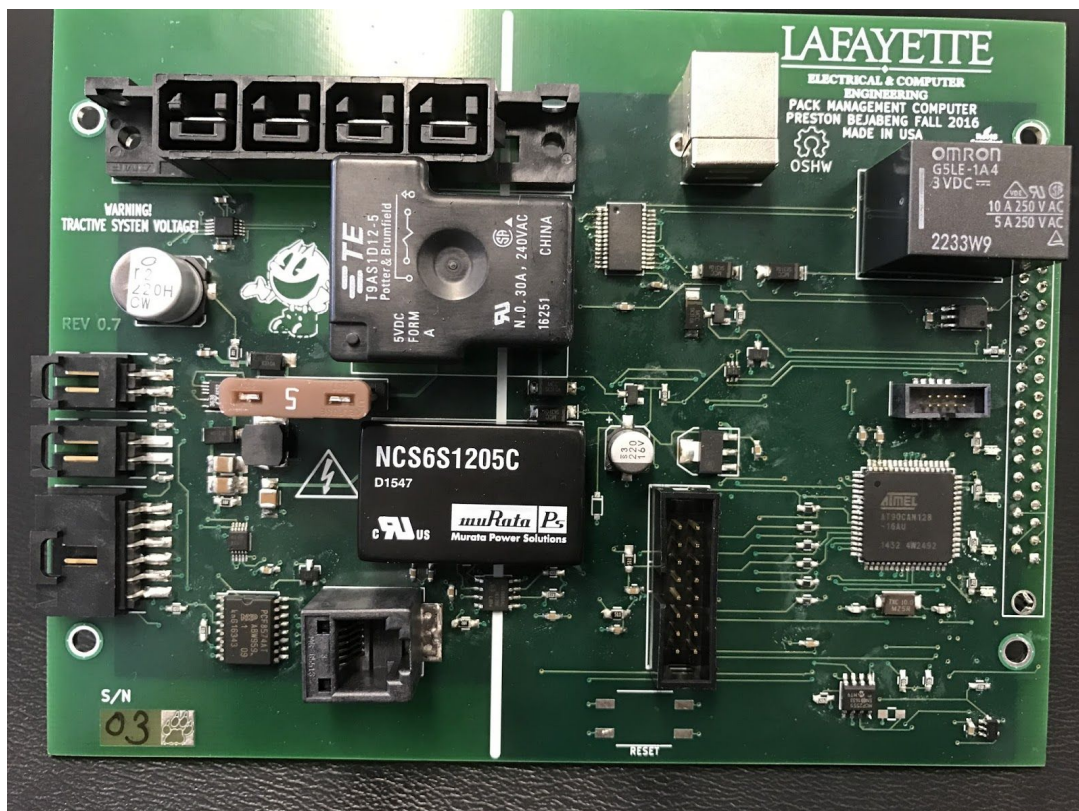


Figure 1. PacMAN 03 Front

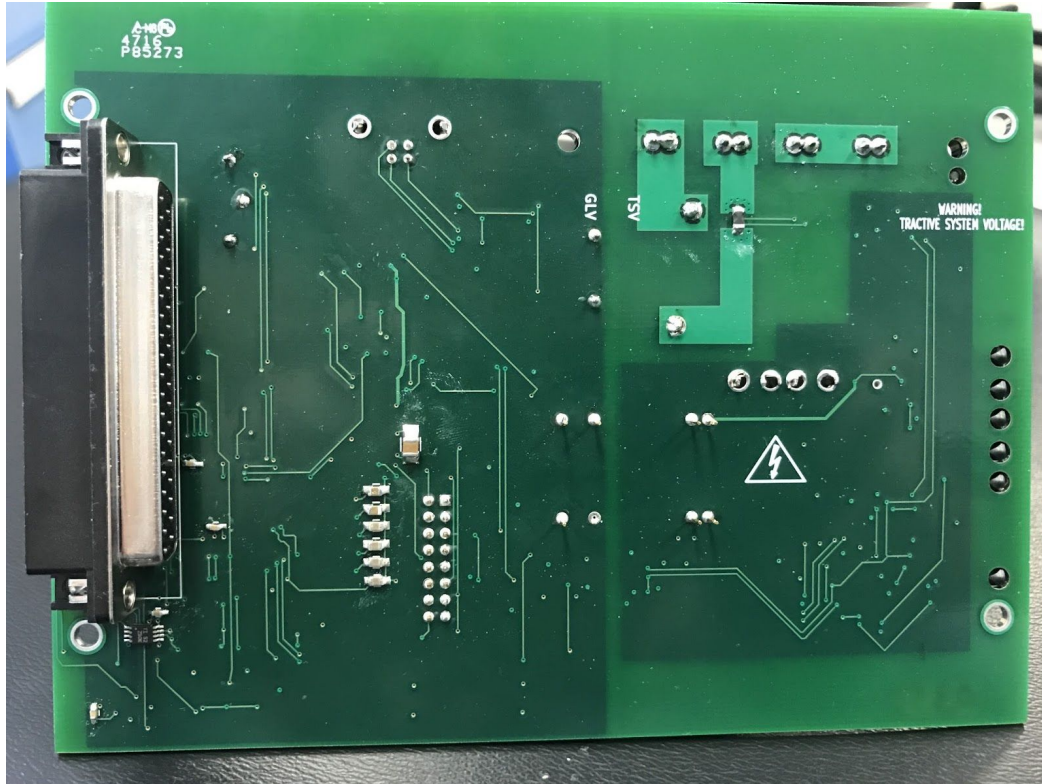


Figure 2. PacMAN 03 Back

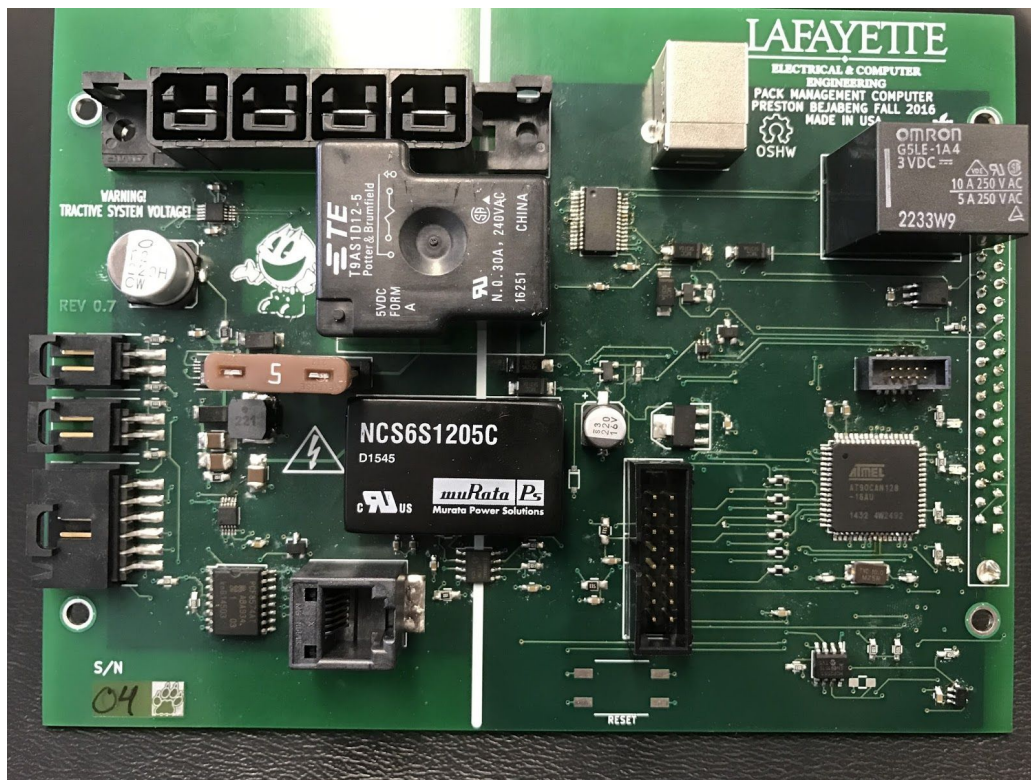


Figure 3. PacMAN 04 Front



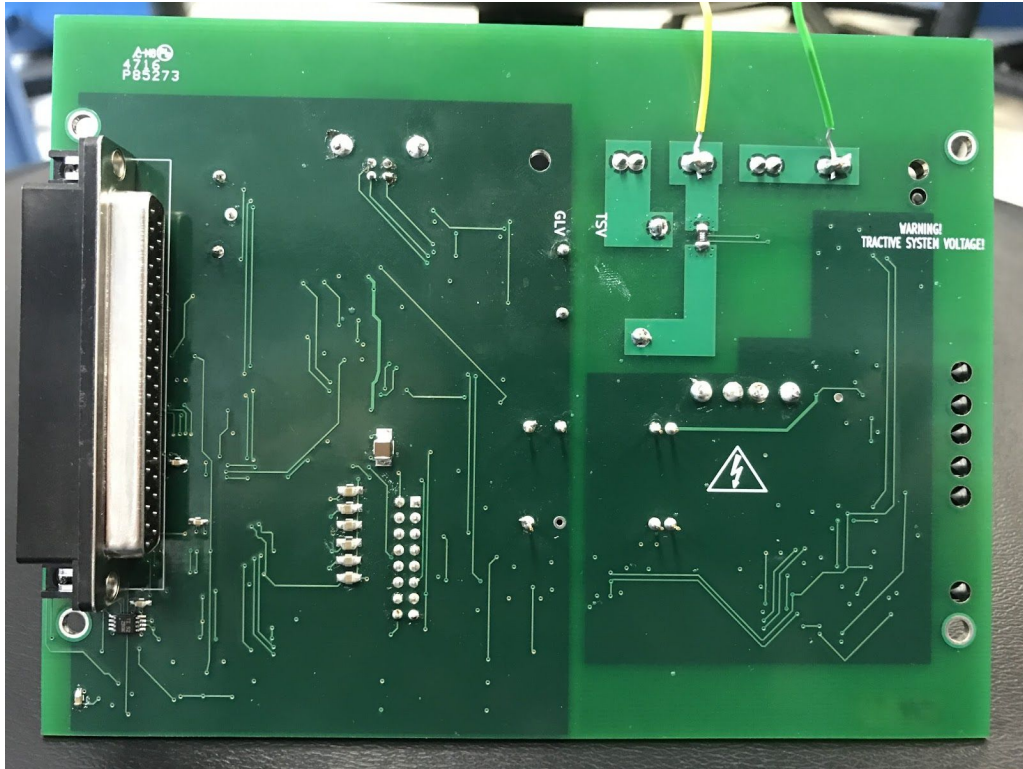


Figure 4. PacMAN 04 Back

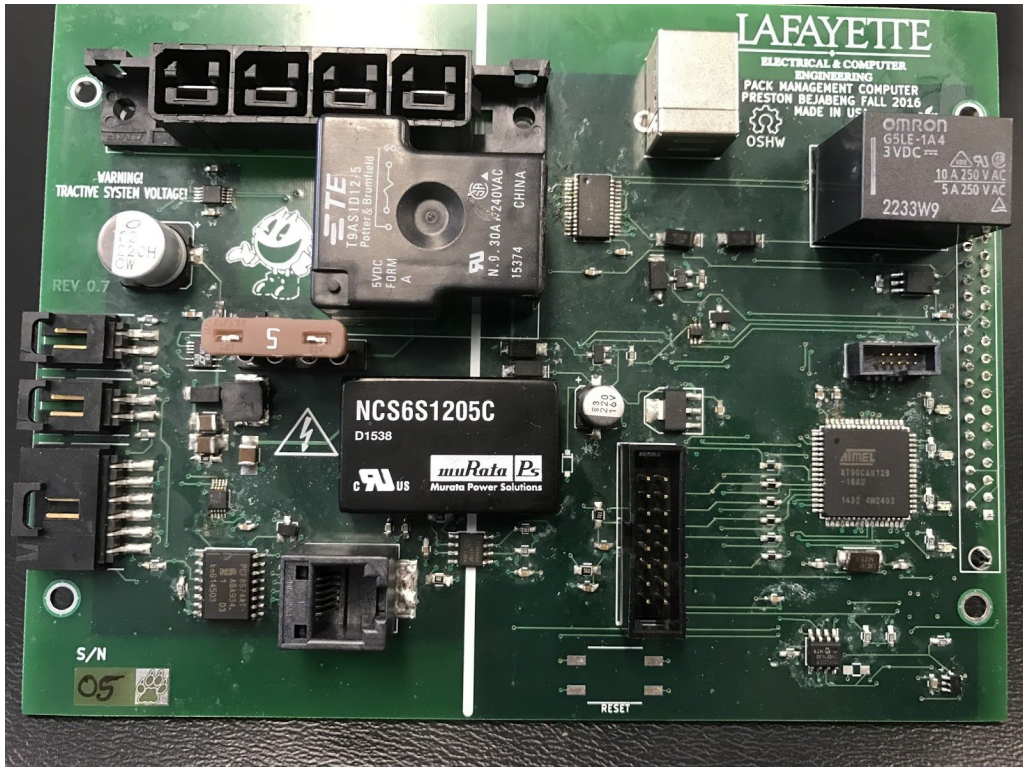


Figure 5. PacMAN 5 Front

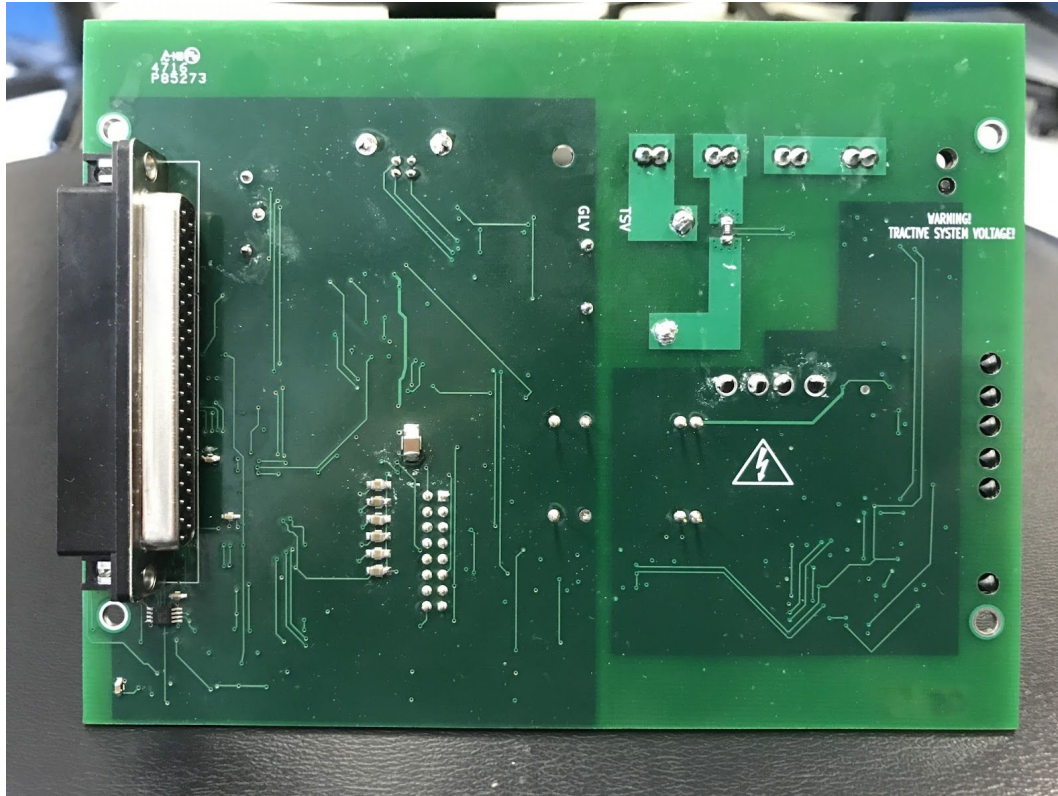


Figure 6. PacMAN 05 Back