

**Research Experience for Undergraduates (REU)
in Sustainable BioEnergy at the Center For Sustainable Energy (CSE)**

May 26, 2015 - July 31, 2015



The CSE Program is... An interdisciplinary program that advances sustainable bioenergy solutions. CSE trains researchers in science, engineering, economics, and social implications of bioenergy through focus on issues facing the Great Plains.

The CSE Program spans six departments at K-State:

- Agronomy
- Agricultural Economics
- Biological & Ag Engineering
- Chemical Engineering
- Grain Science & Industry
- Sociology

CSE-REU participants receive:

- Stipend: \$4,500
- Paid Housing
- Paid Meals
- Travel allowance
- Total value: \$7,600.00

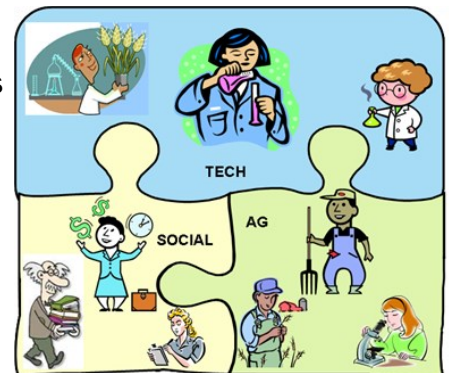
CSE-REU participants contribute to one of many collaborative, interdisciplinary research projects relating to sustainable bioenergy production. Research spans all methods and aims to develop sustainable solutions across the bioenergy supply chain, including:

- Agricultural Issues (agronomy, soil carbon sequestration, logistics, storage, etc.)
- Technical Issues (conversion of biomass to chemicals)
- Socioeconomic Issues (impact on communities, economic viability)

In the CSE-REU, participants will....

- Produce an original research project with one or multiple faculty members in six different departments (see sidebar);
- Be paired with a primary research mentor from an academic department paired with your background and interest.
- Participate in field experiences where you'll learn how biomass is processed;
- Receive training on designing experiments and reporting results;
- Participate in organized social events with other REU students, graduate students, and faculty members.

To be eligible, students must be U.S. citizens or permanent residents and must be enrolled in an undergraduate program at a college or university through Fall 2015 (sorry, graduating seniors cannot be accepted).



For program and application information, contact Mr. Keith Rutlin,
CSE Educational Programs Administrator

rutlin@ksu.edu • 785-532-2029 • www.cse.ksu.edu/REU

Sponsored by the National Science Foundation