

## THE ART OF URBAN ENVIRONMENTS



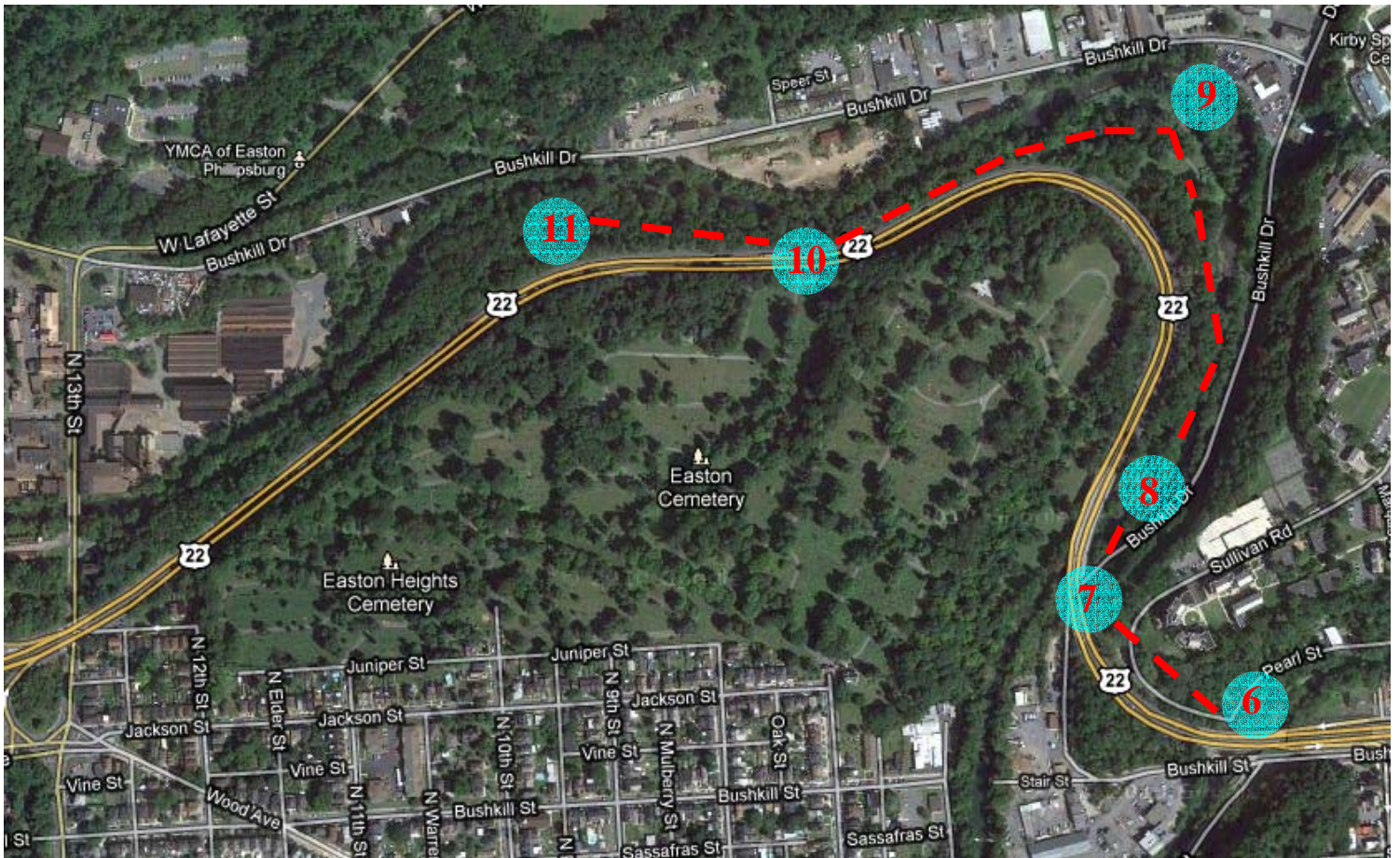
INSTALLATIONS AND PERFORMANCES THAT ENGAGE PLACES OF NATURE ART AND CULTURE IN TRANSFORMING THE POST-INDUSTRIAL AMERICAN CITY

### ROUTE I.

### BUSHKILL CORRIDOR

#### Cluster B: Bushkill Arts Trail Karl Stirner Trail

- Easton Cemetery is a prime example of a mid 19<sup>th</sup> century “garden cemetery” and is listed on the National Register of Historic Places
- Follows the Bushkill Creek , a tributary of the Delaware River and a popular trout fishing stream
- New arts trail connecting Downtown Easton, College Hill (a residential neighborhood adjacent to Lafayette College), and the West Ward
- Railroad and industrial archaeology
- The site of water-powered mills since the late-18<sup>th</sup> century



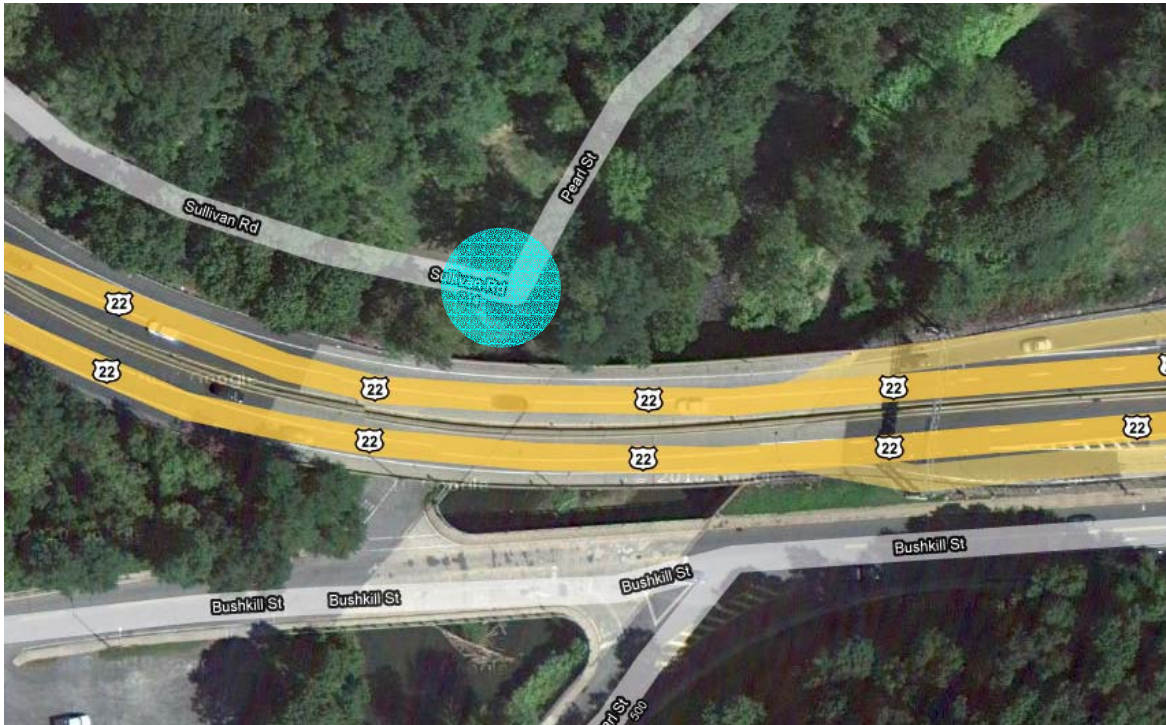
## THE ART OF URBAN ENVIRONMENTS



INSTALLATIONS AND PERFORMANCES THAT ENGAGE PLACES OF NATURE ART AND CULTURE IN TRANSFORMING THE POST-INDUSTRIAL AMERICAN CITY

### Site 6

### **Pearl Street and Sullivan Road, near and under State Route 22 Overpass** *(Lafayette College and City of Easton)*



## THE ART OF URBAN ENVIRONMENTS



INSTALLATIONS AND PERFORMANCES THAT ENGAGE PLACES OF NATURE ART AND CULTURE IN TRANSFORMING THE POST-INDUSTRIAL AMERICAN CITY

Site 7

### **Railroad Bed, under State Route 22** *(City of Easton)*



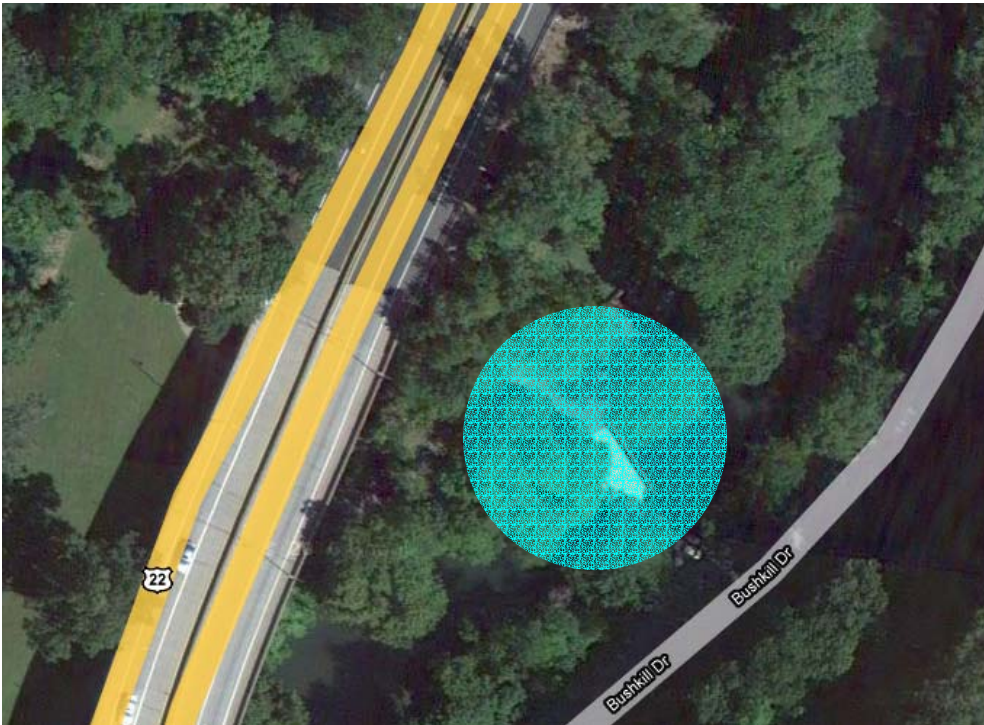
## THE ART OF URBAN ENVIRONMENTS



INSTALLATIONS AND PERFORMANCES THAT ENGAGE PLACES OF NATURE ART AND CULTURE IN TRANSFORMING THE POST-INDUSTRIAL AMERICAN CITY

### Site 8

#### **Ascension Road Entrance to Easton Cemetery** *(Easton Cemetery)*



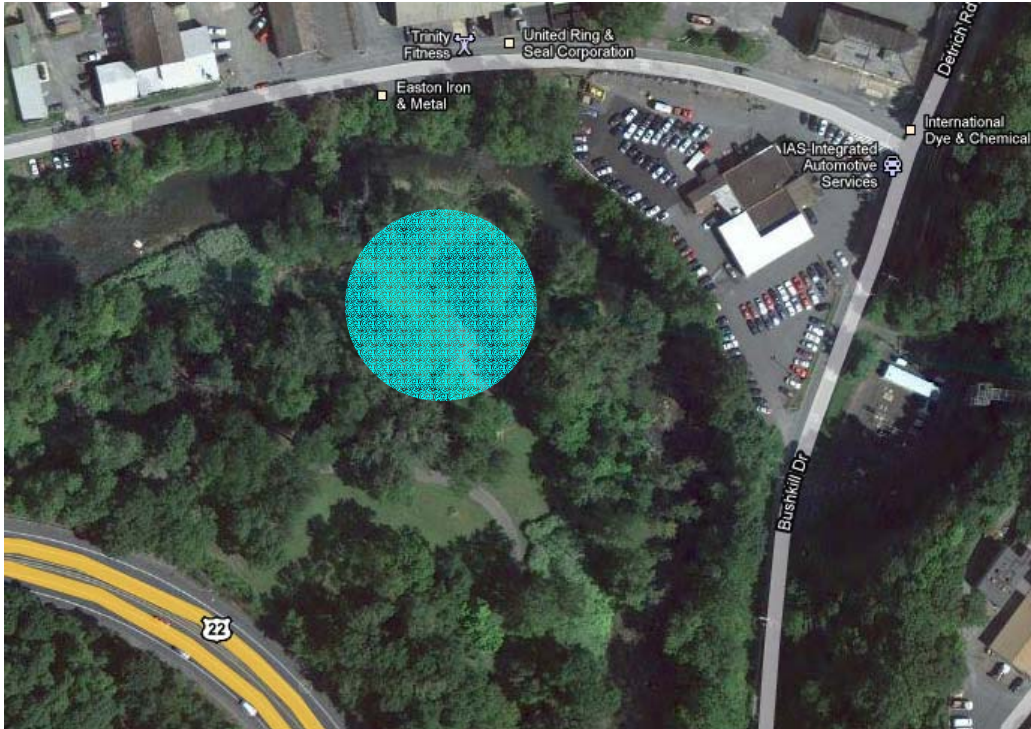
## THE ART OF URBAN ENVIRONMENTS



INSTALLATIONS AND PERFORMANCES THAT ENGAGE PLACES OF NATURE ART AND CULTURE IN TRANSFORMING THE POST-INDUSTRIAL AMERICAN CITY

Site 9

### **Clearing at Bend of the Bushkill** *(Easton Cemetery)*



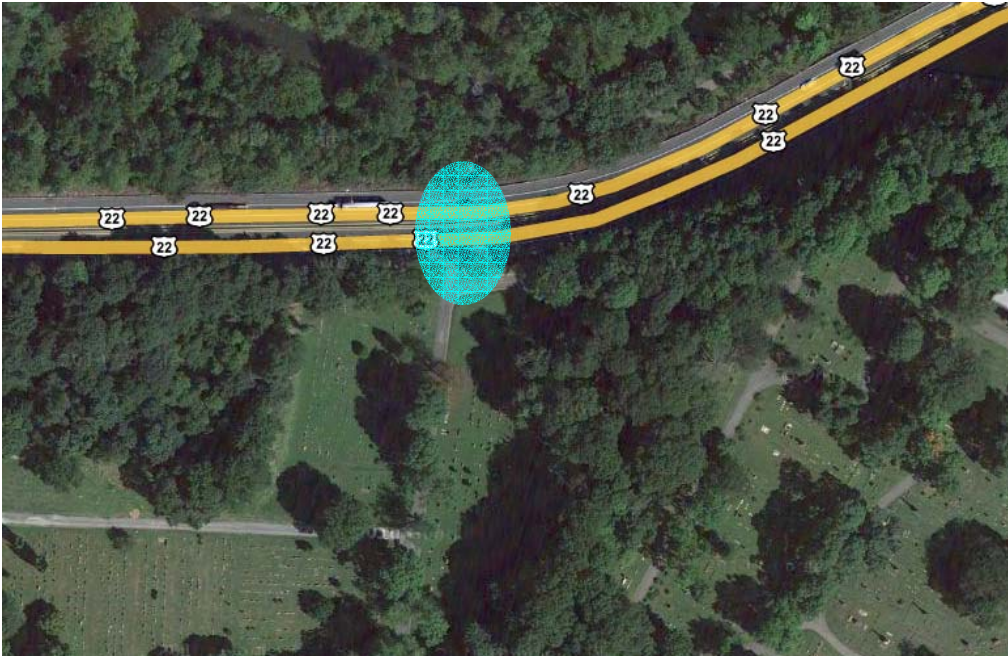
## THE ART OF URBAN ENVIRONMENTS



INSTALLATIONS AND PERFORMANCES THAT ENGAGE PLACES OF NATURE ART AND CULTURE IN TRANSFORMING THE POST-INDUSTRIAL AMERICAN CITY

Site 10

### **Tunnel Entrance to Easton Cemetery, under State Route 22** *(Easton Cemetery)*



## THE ART OF URBAN ENVIRONMENTS



INSTALLATIONS AND PERFORMANCES THAT ENGAGE PLACES OF NATURE ART AND CULTURE IN TRANSFORMING THE POST-INDUSTRIAL AMERICAN CITY

### Site 11

## Railroad Trestle over the Bushkill (City of Easton)

