

THE ART OF URBAN ENVIRONMENTS



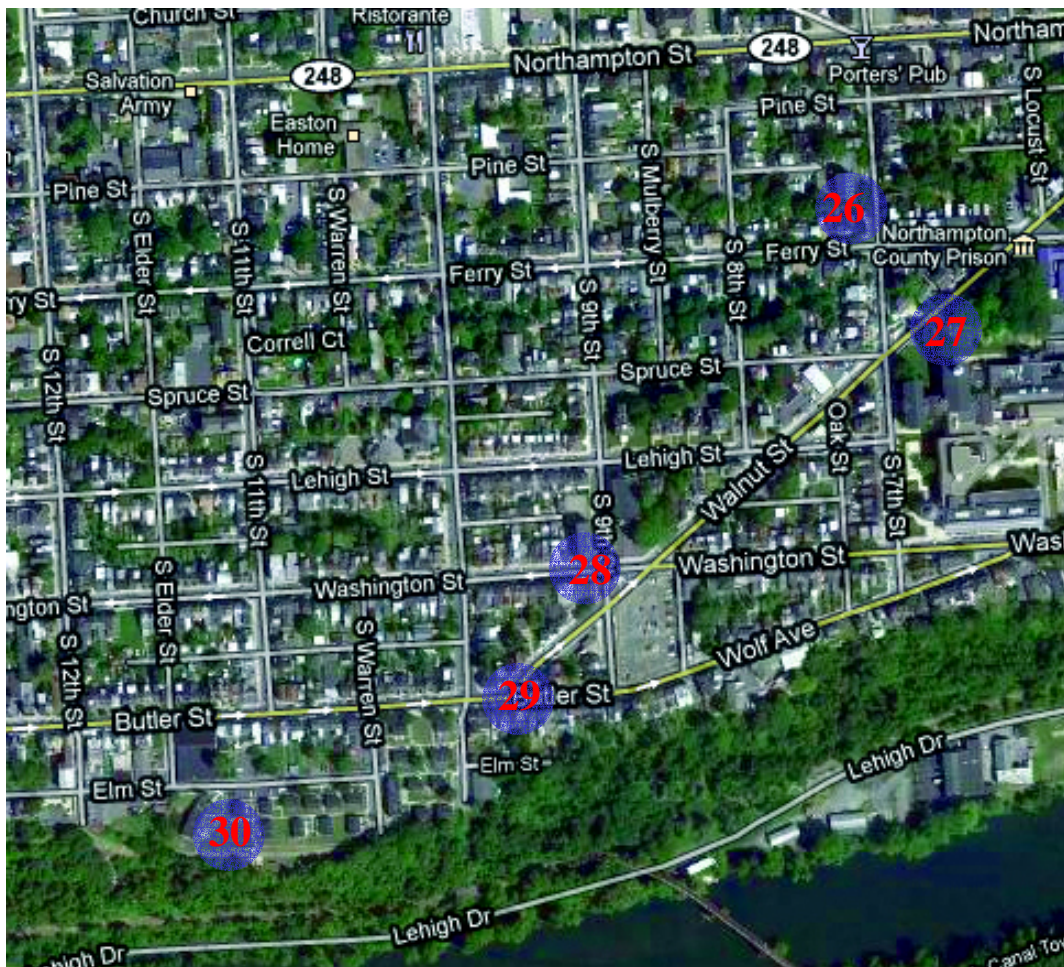
INSTALLATIONS AND PERFORMANCES THAT ENGAGE PLACES OF NATURE ART AND CULTURE IN TRANSFORMING THE POST-INDUSTRIAL AMERICAN CITY

ROUTE II.

SEVENTH STREET: FROM EASTON CEMETERY TO THE NORTHAMPTON COUNTY COURTHOUSE

Cluster C: South Seventh Street, Walnut Street, and Butler Street

- The historic Northampton County Courthouse and prison date from first half of the 19th century; the prison houses 800 inmates, 10% are women
- The Easton Area Community Center serves Easton children, 1,000 live in the West Ward; Heavy Weight Boxing Champion Larry Holmes is an alumnus
- The Lehigh River, once heavily industrialized, defines the southern boundary of the West Ward.



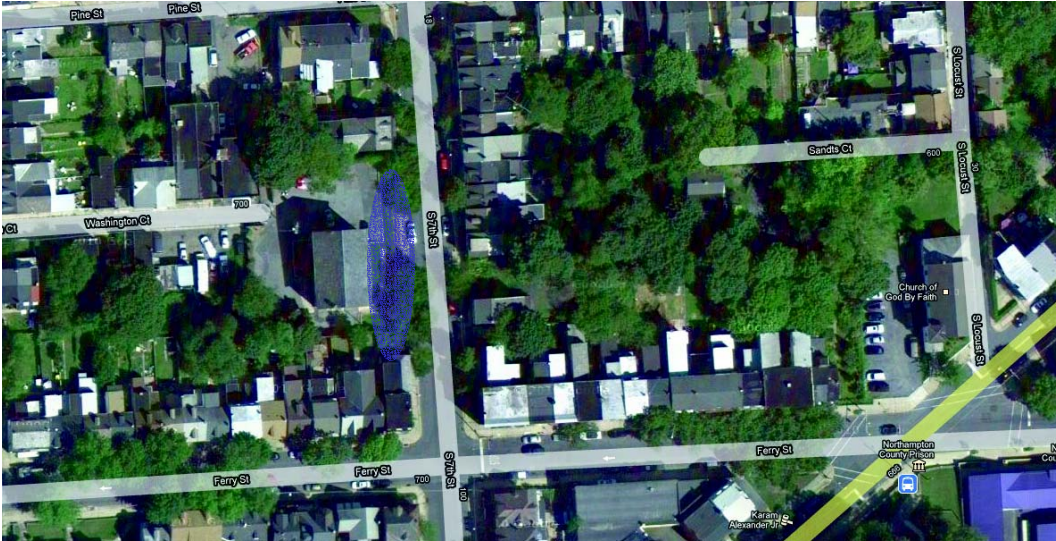
THE ART OF URBAN ENVIRONMENTS



INSTALLATIONS AND PERFORMANCES THAT ENGAGE PLACES OF NATURE ART AND CULTURE IN TRANSFORMING THE POST-INDUSTRIAL AMERICAN CITY

Site 26

Stone Wall, 37 South Seventh Street (Private Owner) West Ward



THE ART OF URBAN ENVIRONMENTS



INSTALLATIONS AND PERFORMANCES THAT
ENGAGE PLACES OF NATURE ART AND
CULTURE IN TRANSFORMING THE POST-
INDUSTRIAL AMERICAN CITY



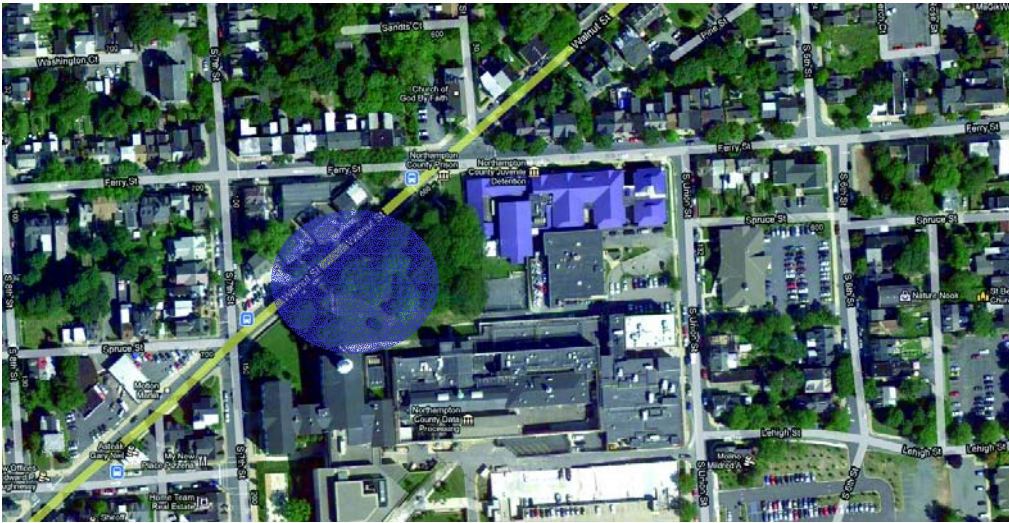
THE ART OF URBAN ENVIRONMENTS



INSTALLATIONS AND PERFORMANCES THAT ENGAGE PLACES OF NATURE ART AND CULTURE IN TRANSFORMING THE POST-INDUSTRIAL AMERICAN CITY

Site 27

Northampton County Courthouse, Walnut Street and Ferry Street *(Northampton County) West Ward*



THE ART OF URBAN ENVIRONMENTS



INSTALLATIONS AND PERFORMANCES THAT ENGAGE PLACES OF NATURE ART AND CULTURE IN TRANSFORMING THE POST-INDUSTRIAL AMERICAN CITY



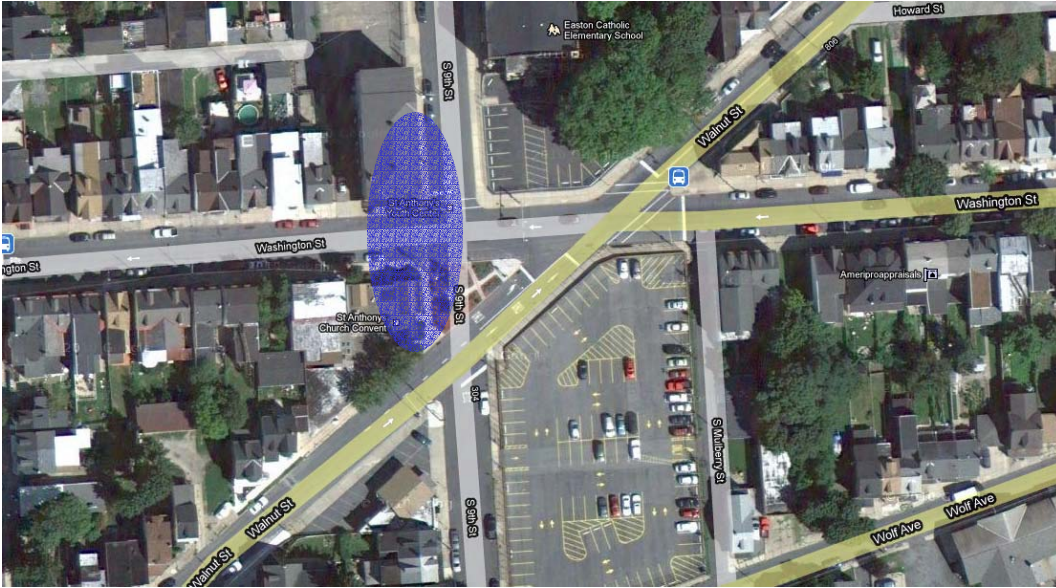
THE ART OF URBAN ENVIRONMENTS



INSTALLATIONS AND PERFORMANCES THAT ENGAGE PLACES OF NATURE ART AND CULTURE IN TRANSFORMING THE POST-INDUSTRIAL AMERICAN CITY

Site 28

Easton Area Community Center *(Private Owner) West Ward*



THE ART OF URBAN ENVIRONMENTS



INSTALLATIONS AND PERFORMANCES THAT ENGAGE PLACES OF NATURE ART AND CULTURE IN TRANSFORMING THE POST-INDUSTRIAL AMERICAN CITY



THE ART OF URBAN ENVIRONMENTS



INSTALLATIONS AND PERFORMANCES THAT ENGAGE PLACES OF NATURE ART AND CULTURE IN TRANSFORMING THE POST-INDUSTRIAL AMERICAN CITY

Site 29

Street Triangle *(City of Easton) West Ward*



THE ART OF URBAN ENVIRONMENTS



INSTALLATIONS AND PERFORMANCES THAT ENGAGE PLACES OF NATURE ART AND CULTURE IN TRANSFORMING THE POST-INDUSTRIAL AMERICAN CITY





Site 30

Public Housing, Terraces and Lawn at 1108 Elm Street Overlooking the Lehigh River *(Easton Housing Authority) West Ward*



THE ART OF URBAN ENVIRONMENTS



INSTALLATIONS AND PERFORMANCES THAT ENGAGE PLACES OF NATURE ART AND CULTURE IN TRANSFORMING THE POST-INDUSTRIAL AMERICAN CITY

