



# Potential New Member Handbook

Sorority Recruitment 2015

Lafayette College



Twitter: [@LafayettePanhel](https://twitter.com/LafayettePanhel)



Facebook: [Lafayette College Panhellenic](https://www.facebook.com/LafayetteCollegePanhellenic)



Website: [sites.lafayette.edu/panhel/](https://sites.lafayette.edu/panhel/)



## Dear Potential New Members,

Welcome and congratulations! As the President of the Panhellenic Council, I am so thrilled that you decided to be a part of the Formal Recruitment process. Greek Life at Lafayette is its own special experience, and I can't wait for you all to get a taste of it. Being a PNM can be intimidating and scary at times, but the reward for going through this process cannot be described. My only hope for all of this is for every single one of you finds a home in any one of our six amazing chapters. They're all extraordinary in their own way, which you will get to see very soon.

Recruitment is demanding, both from your side as well as the chapters'; I would know since I've been on both. Speaking from experience, I have a few pieces of advice I hope you will all truly follow (I also wouldn't be telling you this if it didn't work!).

Do NOT (as hard as it may be) follow your friends. Your group of freshman year friends will always be there no matter what chapters you decide to join. This is the perfect time to be selfish – go where it's going to be best for you! Think about this: you didn't follow your best friend to college did you? Then why would you do the same for a sorority?

Don't judge a book by its cover. Stereotypes are not a good basis for an opinion on a chapter. If you go with your gut and ignore what other people are saying, you will end up exactly where you are meant to be. Every chapter here offers something unique, and you can only find it with an open mind.

Have fun and don't stress! You are going to be meeting new women every night and learning about what makes their chapter special, so I hope you make the best of it. Yes we will all be tired and worked up at times, but don't let that ruin the entire process. Did you let taking the SAT's and re-writing your college essay 100 times ruin getting into Lafayette? I don't think so.

Formal Recruitment can seem tedious, but it was designed so that you have the best chances of joining a chapter that you can call home. Trust the process. And if you can't trust the process, then trust us – your Panhellenic Council and team of Rho Gammas. We are going to do everything in our power to make Recruitment as fun and stress-free as possible. Any questions, comments, concerns, or if you just want to chat, reach out – that's what we're here for!

Deep breath, take it all in, and I hope to see you all on Bid Day.

Best of luck,

Amanda Schwartz

President of the Panhellenic Council



Dear Potential New Members,

I hope you are all getting excited for recruitment! Although this is an exciting time, I'm sure a lot of you are feeling a bit nervous about the process. When I was about to go through recruitment, I was definitely nervous and didn't know what to expect. I'm one of those people who, as a freshman, really didn't know much about Greek Life and had never thought about going Greek until I realized all of my friends had signed up for recruitment. Fast forward two years, and here I am as Vice President of Membership for Panhellenic Council, running recruitment so you all have the same opportunity I had. Although I had my doubts going through recruitment, it was one of the best decisions I have made while at Lafayette. When I think about my Lafayette experience so far, I can't imagine how it would be without Greek Life. For me, the Greek Community has made such an outstanding impact on my life- it has allowed me to meet so many people and has given me the opportunity to make some of my best friends. Greek Life has allowed me to grow as a person and has led me to many leadership opportunities.

My biggest piece of advice to you while going through recruitment is to go in with an open mind and let whatever happens, happen. It's easy to get hung up on the house you thought you saw yourself in or the house you tried to drop every night but couldn't. You can't control these things, so you can't let it get to you. Look around at all the affiliated women on this campus, they are a testament to trusting the recruitment process and how you end up where you are supposed to be. At the end of the day, just be yourself, meet new people and have fun.

We are so excited to have you and can not wait for recruitment to start!

Jacqueline Cirincione  
Vice President of Membership  
Panhellenic Council



# POTENTIAL NEW MEMBER BILL OF RIGHTS

1. The right to be treated as an individual.
2. The right to be fully informed about the recruitment process.
3. The right to ask questions and receive true and objective answers.
4. The right to be treated with respect.
5. The right to be treated as a capable and mature person without being patronized.
6. The right to ask how and why and receive straight answers.
7. The right to have and express opinions.
8. The right to make informed choice without undue pressure from others.
9. The right to be fully informed about the binding agreements implicit in the Women's Panhellenic Membership Recruitment Acceptance Binding Agreement.
10. The right to make one's own choice and decision and accept full responsibility for the results of that decision.
11. The right to have a positive, safe, and enriching recruitment and initiation experience.



## TIPS

### Do's:

- Be yourself.
- Have genuine , honest conversations.
- Keep an open mind.
- Ask questions.
- Trust the process.
- Go to your Rho Gamma if you need help!
- Have Fun!

### Don't's:

- Listen to chapter reputations.
- Wear new shoes.
- Be scared or nervous!
- Forget to have fun!



# SORORITY VOCABULARY

**Bid:** Formal Invitation to join a sorority or fraternity.

**Chapter:** A branch of sorority or fraternity on a college campus.

**Initiation:** Formal ceremony in which a pledged member becomes an active member.

**New Member:** a member of a women's fraternity (sorority) who is not yet an initiated member.

**New Member Period:** Period of time after a bid has been accepted in which new members learn the history and purpose of their new organization.

**Panhellenic Council:** The central governing body of all sororities on campus.

**Philanthropy:** An activity or event that raises awareness and collects money and/or donated goods for a charitable organization or cause. F/S host philanthropic events to raise money or collect items for their philanthropy.

**Potential New Member (PNM):** An undergraduate female who is participating in recruitment.

**Rho Gamma:** A member who serves as an unaffiliated recruitment counselor, who assist potential new members through the recruitment process. Each Rho Gamma is assigned a group of potential new members to guide, answer questions and help as best as they can.



# RECRUITMENT SCHEDULE

## **Day 0: Sunday, August 30<sup>th</sup> - PNM Orientation**

Sunday, August 30<sup>th</sup> 7:00 p.m. in Colton Chapel (subject to change)

## **Day 1: Thursday, September 3<sup>rd</sup> - Friendship Night**

Party 1: 6:00-6:30 p.m.

Party 2: 6:45-7:15 p.m.

Party 3: 7:30-8:00 p.m.

Party 4: 8:15-8:45 p.m.

Party 5: 9:00-9:30 p.m.

Party 6: 9:45-10:15 p.m.

## **Day 2: Friday, September 4<sup>th</sup> - House Tours & Philanthropy Night**

Party 1: 6:00-6:45 p.m.

Party 2: 7:00-7:45 p.m.

Party 3: 8:00-8:45 p.m.

Party 4: 9:00-9:45 p.m.

## **Day 3: Saturday, September 5<sup>th</sup> - Preference Night**

Party 1: 6:30-7:30 p.m.

Party 2: 7:45-8:45 p.m.

Party 3: 9:00-10:00 p.m.

## **Day 4: Sunday, September 6<sup>th</sup> - Bid Day**

At 11 am, invitations will be extended in Pardee Hall. Bid Day will be hosted on the Quad. In case of rain, the Kirby gym will be reserved.

You will meet with their Rho Gamma Group one hour before the first party each night.

Please arrive at PNM Orientation on August 30<sup>th</sup> with any conflicts you may have during the week.

# WHAT TO WEAR

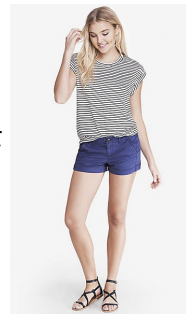
## Friendship Night (Thursday)

Please wear your Recruitment tank top (given in advanced), a pair of comfortable shorts and comfortable shoes.



## House Tours & Philanthropy Night (Friday)

Wear something you feel comfortable in! Whether that be shorts, jeans, a skirt, or dress. However you may need to sit on the floor during presentations. You will be walking, so make sure you have comfortable shoes!



## Preference Night (Saturday)

This night is more dressy. Dresses and sandals are suggested. You can wear heels, but you will be walking with limited time.



## Bid Day (Sunday)

Please arrive in comfortable shorts, shoes and a tank top. You will receive a Bid Day Shirt later in the afternoon.



# ALPHA GAMMA DELTA

**Mascot:** Squirrel **Colors:** Red, Buff, Green **Jewel:** Pearl

**Flower:** A red and a buff rose with green asparagus plumosa fern

**Philanthropy:** The Alpha Gamma Delta Foundation, Diabetes Awareness and Education

**Founded:** Syracuse University 1904 **Zeta Theta Founded:** 1981

**Dues:** \$660 (New Member– Fall Semester ) \$376 (Sister– per Semester)

Dear Friends, My name is Jenna Gowell and I'm the Vice President of Recruitment for Alpha Gamma Delta. I'm absolutely delighted that you've decided to try out Greek life, and on behalf of the chapter, I wanted to let you know that we are so excited to meet you! Our sisters are involved all over campus, whether it's serving at the Landis Center, competing as varsity athletes, leading student organizations, or simply enjoying all that Lafayette has to offer. We're also dedicated to our academic and philanthropic passions, and are proud to announce that we averaged a 3.63 GPA this semester while launching our first annual Alpha Gam Kan Jam and AGDe-stress Week! However, the thing we love the most about AGD is the fact that our sisters all have very different passions, but we support each others' interests as if they were our own. I can't wait to introduce you to the women that inspire me, and we're so excited to learn about your own passions!! I hope you're excited for one of the best weeks of your life-- I know we are!



# ALPHA PHI

**Mascot:** Phi Bear **Symbol:** Ivy Leaf **Colors:** Silver and Bordeaux **Flower:** Lily of the Valley

**Philanthropy:** The Alpha Phi Foundation

**Founded:** Syracuse University 1872 **Eta Sigma Founded:** 1989

**Dues:** \$1256.43 (New Member first year ) \$816.43(Sister per year)

Hi everyone! My name is Gabby and I'm the Recruitment Chair for Alpha Phi. In our sorority, our sisters help make Lafayette College a better place by being Landis leaders, POSP volunteers, academic tutors, and Student Government representatives. Our sisterhood supports each other by attending events we're passionate about, such as a basketball game or a choir concert. Each spring, we host Alpha Phifa, a philanthropy event where teams of five register to compete in short soccer games. We are proud to have raised \$1,110 this spring for the Alpha Phi Foundation from this event alone! By having all sisters participate in events like these, we are able to create a supportive and welcoming environment within our sorority, something we see as one of the most important aspects of a sisterhood.

We are so excited to meet all of you!





# DELTA DELTA DELTA

**Mascot:** Dolphin **Colors:** Silver, Gold and Cerulean Blue **Jewel:** Pearl **Flower:** Pansy

**Philanthropy:** St. Jude Children's Research Hospital **Founded:** Boston University, 1888

**Gamma Mu Founded:** 1992 **Dues:** \$738 (New Member Semester) \$371 (Sister per Semester)

Hi, my name is Christine Calella, and I'm the Vice President of Membership for Delta Delta Delta.

Everybody here is really excited for recruitment to begin, and we hope you are too! The girls in our chapter tend to be really involved on campus, and to lead the way in their extracurricular activities. We have sisters serving as major officers and coordinators in various Landis programs, the Hillel Society, the International Students Association, the Marquis Players, and the American Society of Civil Engineers, to name just a few. However, one of the things we are most passionate about is our philanthropy with St. Jude Children's Research Hospital. Every year, we run three major events to bring money to St. Jude: DHOP, Cones for a Cure, and Sincerely Yours. Last year was an awesome year for philanthropy. Between DHOP and Cones, we raised over 3,000 dollars for the hospital, and for Sincerely Yours, we wrote and mailed 1,649 letters to friends and family encouraging them to donate to the cause. Can't wait to meet and get to know all of you, and we hope you have a fun and stress-free recruitment! Wishing you the best of luck!



# DELTA GAMMA

**Symbol:** Anchor **Colors:** Bronze, Pink, Blue **Flower:** Cream Colored Rose

**Philanthropy:** Service for Sight **Founded:** Lewis School for Girls, 1873 **Epsilon Xi Founded:** 1982

**Dues:** \$875 (New Member-first year) \$647(Sister- per year)

Hello! My name is Sarah and I am the Vice President of Membership of the Epsilon Xi Chapter of Delta Gamma Fraternity (yes, a fraternity! We were founded before the word sorority was used). Our founders chose the Greek letters Delta and Gamma based on their desire to "Do Good," which is a motto our chapter takes to heart here at Lafayette College. Each year we host many philanthropy events open to the entire campus, including a Haunted House with Phi Kappa Psi, the Anchor Bowl football tournament, various trunk shows at our house, and more. This past year we completed over 785 hours of community service and raised over \$3,100 for Service For Sight! Our local community service initiative is Adopt-a-Grandparent; once a week our sister's visit the Easton Home and spend time getting to know the seniors there. Singing songs and playing bingo are just a few of our favorite things to do with the residents. My sisters are very involved in a diverse group of activities on campus, including varsity and club athletic teams, The Lafayette newspaper, Colleges Against Cancer club, orchestra, orientation leader program, various honor societies, and much more. Last spring we were honored to receive the 'Greek Chapter of Excellence' award at Relay For Life, for raising more money for the American Cancer Society than any other chapter on campus. I hope you decide to go Greek and find a place you are excited to call home! Looking forward to meeting you all!



# KAPPA KAPPA GAMMA

**Mascot:** Owl **Colors:** Dark Blue, Light Blue **Jewel:** Sapphire **Flower:** Fleur-de-lis **Symbol:** Key

**Philanthropy:** Reading is Fundamental and the Kappa Kappa Gamma Foundation

**Founded Nationally:** Monmouth College, 1870 **Zeta Beta Founded:** 1980

**Dues:** \$605 (New Member– Fall) \$375 (Sister per month)

Hi! My name is Kira Puth and I'm the Recruitment Chair for Kappa Kappa Gamma this fall.

Our chapter, Zeta Beta, is very involved on campus and our sisters love doing activities together. We are active in all areas of campus life, including varsity and club sports teams, OL's, Landis, peer mentoring, and much more. In addition, we really enjoy collaborating with the rest of the Lafayette community. Marina day, one of the largest philanthropy events

at Lafayette, honors a sister of ours who passed away in the summer of 2009. This day serves as a celebration of her life, as well as an appreciation of our strong bond within the Zeta Beta chapter. We are so proud of this wonderful event and its ability to bring the entire Greek community together, in addition to a strong attendance from families and many alumnae. This past year we raised over \$3,000 towards a scholarship for Lafayette students in Marina's name. Good luck to everyone in this very exciting time and I hope that you find where is right for you. I can't wait to meet you all in a few short weeks!



# PI BETA PHI

**Mascot:** Angel **Colors:** Wine, Silver Blue **Symbol:** Arrow **Flower:** Wine Carnation

**Philanthropy:** Read. Lead. Achieve. (Literacy) **Founded:** Monmouth College, 1867

**Pennsylvania Eta Founded:** 1980 **Dues:** \$711 (New Member– Fall) \$336 (Sister- per semester)

Hello! My name is Sammy and I am the Vice President of Membership for the Pi Beta Phi chapter at Lafayette College. The current members of Pi Phi and I are so incredibly excited to get to know each and every one of you throughout the recruitment process. The sisters of Pi

Beta Phi are extremely active around campus and display qualities of leadership and dedication. For example, we have sisters who are Lafayette ambassadors, members of student government, EXCEL scholars, writing associates, varsity athletes, founders of Spoon University, and so much more! While involved in many different activities, the sisters of Pi Phi are always fully supportive of one another. We are also a chapter that is committed to giving back to our surrounding community. Twice a week, members of Pi Phi go to the Easton Area Community

Center to help children achieve excellence through academic mentoring and tutoring. By doing so, the sisters of Pi Phi show their dedication to supporting literacy; the fraternity's national philanthropy. We host a variety of fundraisers throughout the year to raise money for various causes and organizations. One of the most notable events Pi Phi hosts each year is our dance marathon, which is the oldest running philanthropy event at Lafayette College! Finally, at Pi Phi we value the strong relationships we have established with our alumnae who serve as mentors and assist with networking for internships and job placement.

We look forward to meeting you!

