

HICKORY RUN STATE PARK
R.R. 1, Box 81
White Haven, PA 18661-9712
Phone: 570-443-0400
e-mail: hickoryrunsp@pa.gov

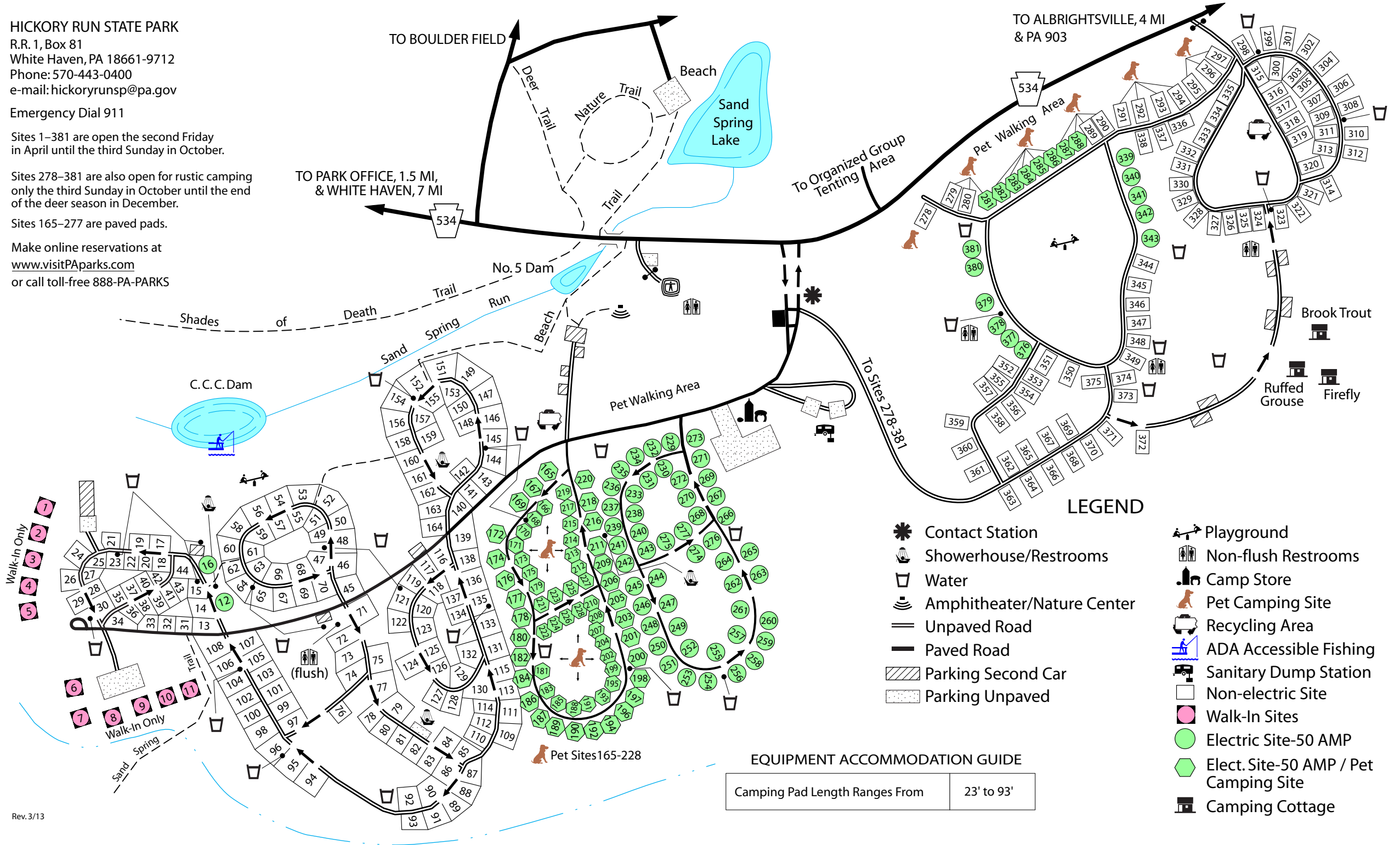
Emergency Dial 911

Sites 1–381 are open the second Friday
in April until the third Sunday in October.

Sites 278–381 are also open for rustic camping
only the third Sunday in October until the end
of the deer season in December.

Sites 165–277 are paved pads.

Make online reservations at
www.visitPAparks.com
or call toll-free 888-PA-PARKS



Hickory Run State Park

In the Western Poconos, this large campground is primarily forested, however there is a grassy, fairly open section. It has modern restrooms with hot showers and a sanitary dump station. A camp store sells general camping supplies, ice, firewood and food.

The Bear Truths

Black bears are wild animals and are stronger and faster than people. Bears use their claws to tear apart rotting logs to find food, and those claws also work well to open garbage cans and coolers.

Black bears have an excellent sense of smell. Aromatic scents coming from your personal items can attract a curious and hungry bear from a great distance. Bears are attracted to the smell of toothpaste, deodorants, air fresheners, food and even the clothes worn while cooking. Store all items inside a vehicle.

Bears that are dependent on eating human food can become aggressive when people get between them and food.

If you come in contact with a black bear, try chasing it away by making loud noises like yelling, honking a car horn or banging a pot. Notify a park employee if you have difficulties with bears.

Pets

Pets are permitted at designated campsites in this campground. Please contact the park office or contact station for guidelines for pets.

Pets are prohibited in swimming areas and all overnight areas, except the campgrounds involved in the pet program. Guide dogs and service dogs are not considered pets.

Camping Season

This campground is open the second Friday of April and closes in mid-December. Shower facilities and the dump station are not available after the third Sunday in October.

Reserving a Site

Most campsites in Pennsylvania state parks can be reserved 11 months in advance to noon of the day of arrival. Campers without a reservation arriving after noon should check at the contact station or near the campground entrance for instructions.

Reservations can be made using MasterCard, VISA, American Express and Discover credit cards or personal, traveler's and cashier's checks. To

receive a confirmed reservation, full payment must be received by the Bureau within ten days of making the reservation.

To reserve a campsite, visit www.visitPAparks.com, or call 888-PA-PARKS (888-727-2757), Monday to Saturday, 7 a.m. to 5 p.m. except on the Thanksgiving Day, Christmas Day and New Year's Day holidays.

Campsite Issuing

Advance reservations are available for almost all campsites. Unreserved sites are available on a first-come, first-served basis. If an employee is not available, read posted instructions and check the "After Hours Posting Report" then proceed to an available site and set up.

The appropriate fee must be paid to a park employee or deposited in a supplied honor system envelope before setting up on a campsite.

Cancellations and Transfers

Changes to an online reservation must be made by calling the Pennsylvania State Parks Reservation Call Center at 888-PA-PARKS, Monday through Saturday, 7 a.m. to 5 p.m. Eastern Time.

Cancellations can be handled via the Internet under "My Account" or by calling the call center. Cancellations made up to the close of business seven days prior to your scheduled arrival date will incur a \$10 cancellation fee. If you cancel six days or less prior to the arrival date, you will forfeit the first night's fee or \$75, whichever is the lesser amount. There is a \$10 fee assessed for all changes made to your reservation, except adding nights to the reservation. Changes to a reservation can be made at the call center, but not via the Internet. Any cancellation or change on the day of arrival must be made through the state park where you have the reservation.

Access for People with Disabilities

If you need an accommodation to participate in park activities due to a disability, please contact the park you plan to visit.

Protect and Preserve Our Campgrounds Maximum Number of People Per Site

Site occupancy is limited to one family unit (persons living under one household) or one non-family unit limited to five persons per site.

Motor Vehicles

Only one car per campsite is allowed unless otherwise posted. Park only in designated areas.

Alcoholic Beverages

Alcoholic beverages are prohibited in all Pennsylvania state parks.

Check-in/Check-out Time

Check-in time is 3 p.m. Campsites must be vacated by 3 p.m. Camping cottages must be vacated by 10 a.m.

Visitors, Quiet Hours and Noise

Visitors are welcome to campsites from 8 a.m. to 10 p.m. Campers must not disturb the sleep of others between 9 p.m. and 8 a.m. Electric generators that create excessive noise are prohibited.

Fires

Fires are permitted only in provided fireplaces or grills. Gas and propane camp stoves are permitted. Please be careful with fire. Fires must be attended at all times and extinguished before leaving the campsite.

Firewood

Firewood is not provided. Cutting live trees or standing trees and the operation of chainsaws are prohibited.

Firewood Advisory

Firewood may contain non-native insects and plant diseases. Bringing firewood into the park from other areas may accidentally spread pest insects and diseases that threaten park resources and the health of our forests. Campers should use local firewood. Do not take wood home and do not leave firewood - Burn It!

Hunting

Firearms and archery equipment used for hunting may be uncased and ready for use only in authorized hunting areas during hunting seasons. In areas not open to hunting or during non-hunting seasons, firearms and archery equipment shall be kept in the owner's car, trailer or leased campsite. The only exception is that law enforcement officers and individuals with a valid *Pennsylvania License to Carry Firearms* may carry said firearm concealed on their person while they are within the park.

Hickory Run State Park



Modern Camping



Hickory Run State Park

R.R. 1, Box 81

White Haven, PA 18661-9712

GPS DD: Lat. 41.02452 Long. -75.68673

570-443-0400

email: hickoryrunsp@pa.gov

www.visitPAparks.com



pennsylvania

DEPARTMENT OF CONSERVATION
AND NATURAL RESOURCES