



LAFAYETTE
ENGINEERING COMPANY

Civil Engineering
Senior Design
Capstone II
2015

Elevating Easton

Marketing Report and
Business Plan for the
Inclined Elevator



- I. Executive Summary
- II. Description of Project
- III. Project Impacts
- IV. Implementation Strategy

LAFAYETTE
ENGINEERING COMPANY

PRIMARY DESIGN GOAL

Improve the physical and social connection between Lafayette College and the greater Easton community through a solution that is outward-looking, forward thinking, and sustainable.

Connected Communities



The Senior Capstone Design Class set out to develop plans that will improve the connectivity of the Lafayette College residential campus to the Film and Media Studies campus. These plans were influenced by the Master Plan Principles that include strengthening the identity of the campus, enhancing College-community gateways, and designing vibrant, intimate spaces and connect through enhanced pedestrian paths.



The team designed an inclined elevator system from College Hill to Downtown Easton, Pennsylvania. With this connection, project facilitates the Master Plan's goals by providing a means for the free exchange of people and ideas up and down College Hill.

DESCRIPTION OF PROJECT

The team determined the feasibility of an inclined elevator system after analyzing different transportation alternatives. This design is a hybrid between an inclined rail system and the traditional elevator and has a two-track rail with two enclosed cars, each with a capacity of 20 passengers.



From A
Distance...



...A Closer
Look

The inclined elevator system contains two landing plazas: one at the top of College Hill adjacent to Marquis and Easton Halls and the other plaza at the bottom entering The Intermodal Transportation and Welcome Center. The final design also incorporates a north-side sidewalk and traffic calming measures along College Avenue.

With the transformative and on-going development of North Third Street and Easton Main Street, there will be an increased need for efficient and convenient transport between the academic campuses and the Easton community. The inclined elevator improves connectivity and accessibility between the two community partners.



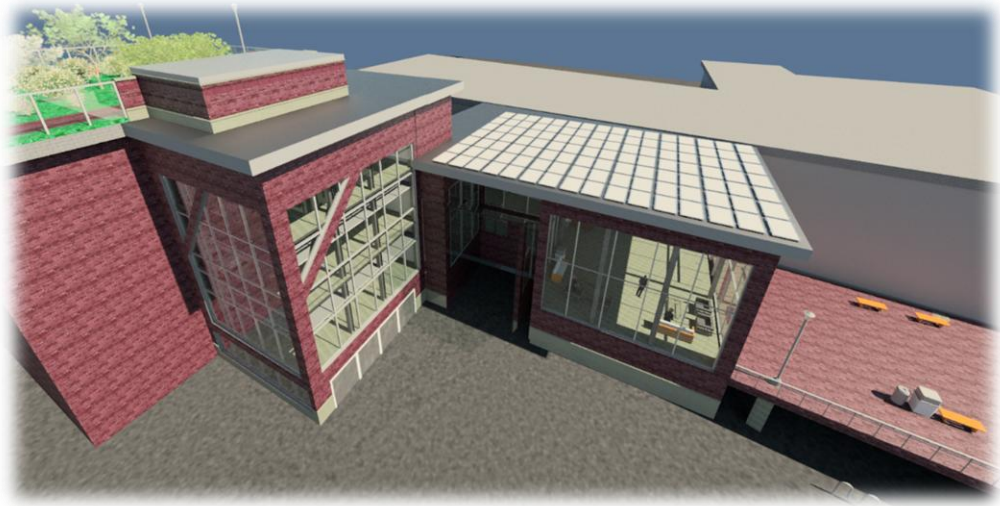
The Daniel and Sandra Weiss Black Box Theater will hold media rooms, student workspace, and faculty office spaces. This enhancement to the Williams Visual Arts Campus will serve as a positive addition to the Lafayette College's gateway, facilitated by an improvement in the vertical accessibility of The Hill.



Visitors will have the opportunity to enter The Mohican Building and the inclined elevator's landing plaza, which will be located below The Mohican Building and The Spot. This location provides a convenient access to The Karl Stirner Arts Trail, encouraging pedestrians and cyclists to explore The City of Easton and it's attractions, including the Simon Silk Mill!



Intermodal Transportation and Welcome Center



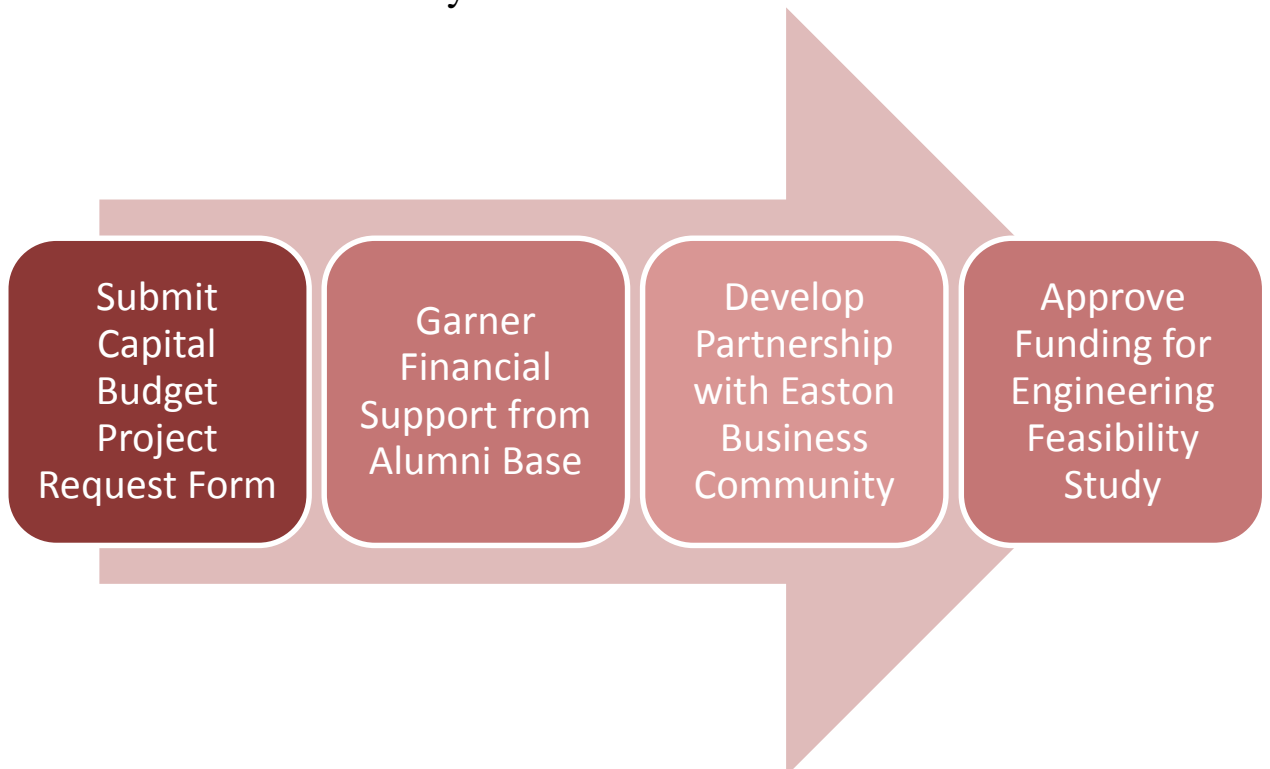
Seamlessly connected to the inclined elevator, the adjoining Intermodal Transportation and Welcome Center is the southern entrance to the system. This building will be a central hub for transportation between College Hill, Williams Visual Arts Campus and downtown Easton. It provides access for pedestrians, cyclists, and users of the inclined elevator, the LCAT Shuttle, and personal vehicles.



Implementation Strategy



Moving forward, the Capital Budget Project Request Form is submitted to the Office of Facilities Planning and Construction to generate financial support and approve funding for a feasibility study, which will analyze the technical and economic feasibility of this inclined elevator system.





Join Us in Promoting Connected Communities

Thank You

